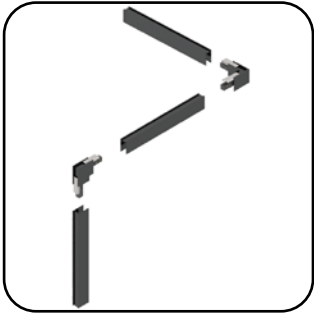




JUPITER

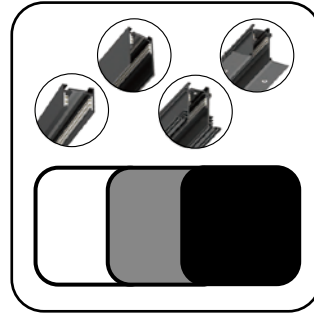
Low-Voltage
Magnetic Track
Series



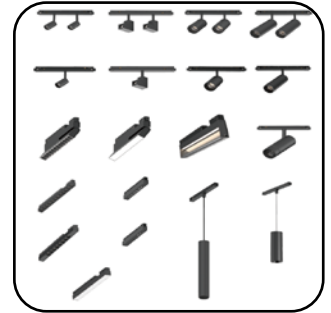
Modular
Design



Easy Installation
Magnetic Track



Multiple Track Styles
&
Colour Options



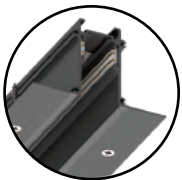
Wide Module
Range

JUPITER

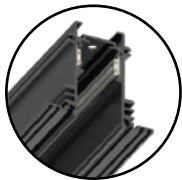
Low-Voltage Magnetic Track Series



TRACK MODULES



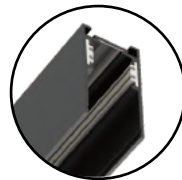
Recessed Fixed Track



Recessed Adjustable Track



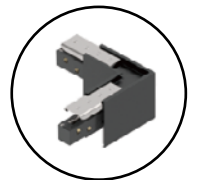
Surface Mounted Slim Track



Surface Mounted Tall Track



Vertical 'L' Connector

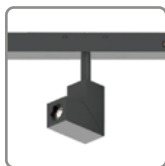


Horizontal 'L' Connector

LOW VOLTAGE MAGNETIC MODULES



Round Spotlight



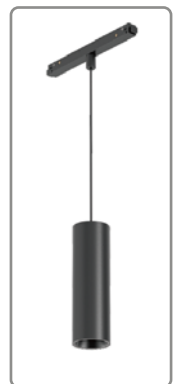
Square Spotlight



Fixed Linear



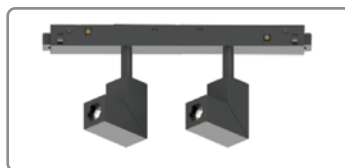
Fixed Strip



Pendant



Twin Round Spotlight



Twin Square Spotlight



Adjustable Linear



Adjustable Strip



Focusable Beam Spotlight



Wall Washer

JUPITER

Low-Voltage Magnetic Track Series

TRACK MODULES SPECIFICATIONS



Product Code
LY-TR-JUTSL-①-②-③



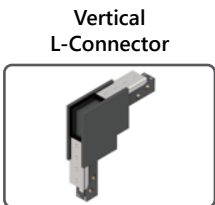
Product Code
LY-TR-JUTTL-①-②-③



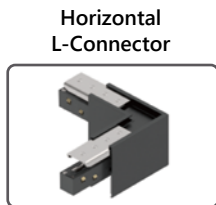
Product Code
LY-TR-JUTRF-①-②-③



Product Code
LY-TR-JUTRA-①-②-③



Product Code
LY-TR-JUTVC-①-③



Product Code
LY-TR-JUTHC-①-③

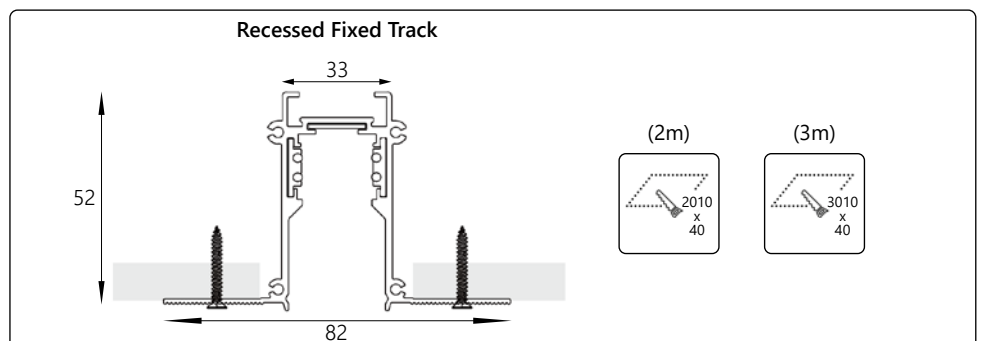
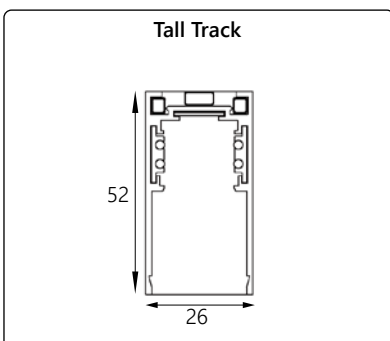
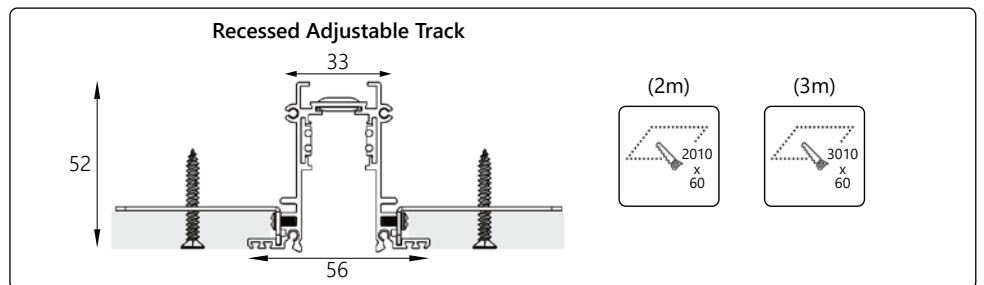
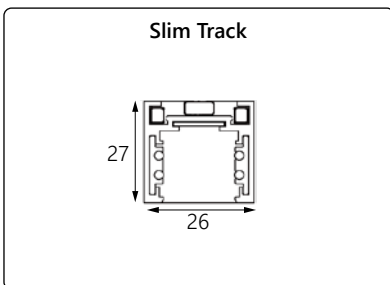


CUSTOMIZABLE SPECIFICATIONS

① Track Colour	② Track Length	③ IP Rating
WH (White) GY (Grey) BK (Black)	2M 3M	IP20 IP54

(Example Code Format: LY-TR-JUTSL-BK-2M-IP20)

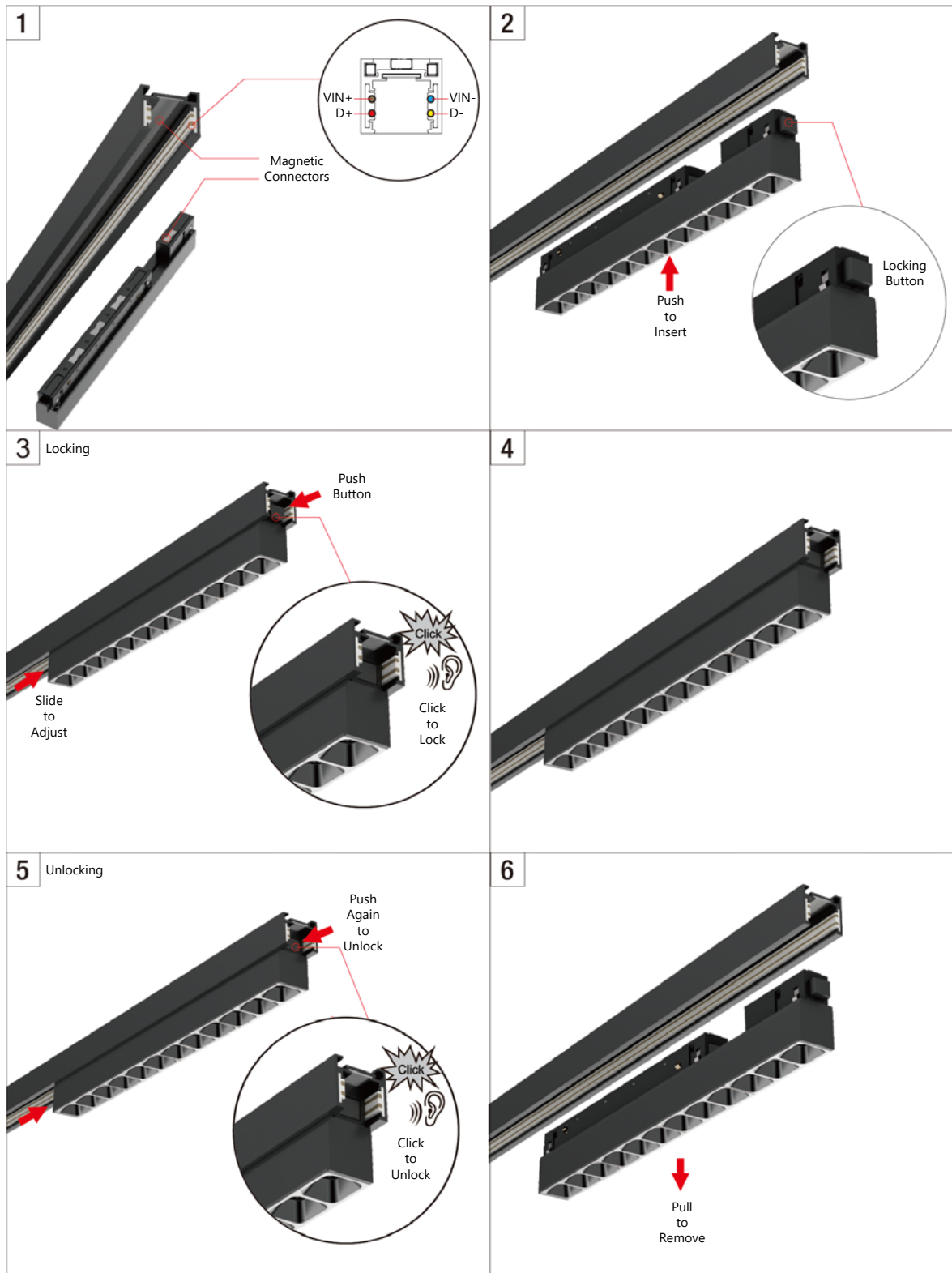
DIMENSIONS (MM)



JUPITER

Low-Voltage Magnetic Track Series

Jupiter Track Installation Guide



JUPITER

Low-Voltage Magnetic Track Series

Jupiter SS22



CRI 80 90 90+	PHASE	1-10V	DALI
2-3step McAdam <small>(optional)</small>	5 Years warranty	Operating Hours > 100,000	L70 > 50,000 Hours
UGR <19	OPERATION TEMP -20°C to 50°C!	RoHS	CE

SPECIFICATIONS

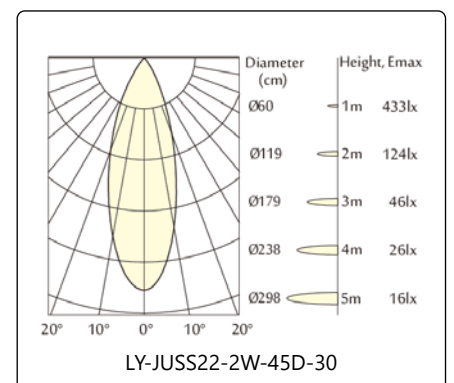
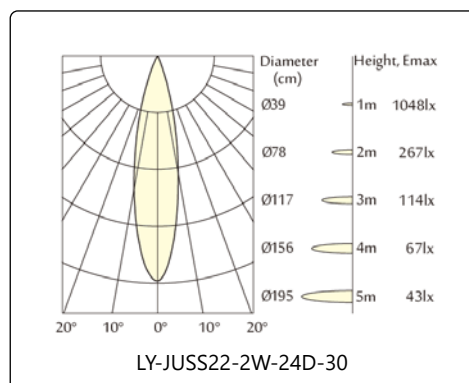
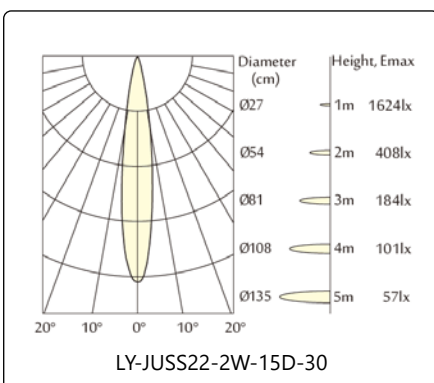
Product Code	LED Output (lm)	LED Power (W)	Efficiency (lm/W)	Input Voltage (V)	System Power (W)
LY-TR-JUSS22-2W-①-②-③-④-⑤	260	2	130	48	3

CUSTOMIZABLE SPECIFICATIONS

① Beam Angle	② Colour Temperature	③ Housing Colour	④ IP Rating	⑤ Dimming
15D 24D 35D	27 (2700K) 30 (3000K) 40 (4000K) 60 (6000K)	BK (Black) WH (White) GY (Grey)	IP20 IP54	ND (Non-Dimming) DA (Dali) D0 (0-10V)

(Example Code Format: LY-TR-JUSS22-2W-24D-40-BK-IP20-DA)

DIMENSIONS (MM) & LIGHT DISTRIBUTION



JUPITER

Low-Voltage Magnetic Track Series

Jupiter SS22 Twin



CRI 80 90 90+	PHASE	1-10V	DALI
2-3step McAdam <small>(optional)</small>	5 Years warranty	Operating Hours > 100,000	L70 > 50,000 Hours
UGR <19	OPERATION TEMP -20°C to 50°C!	RoHS	CE

SPECIFICATIONS

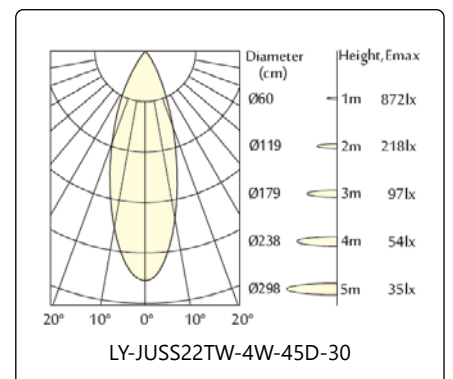
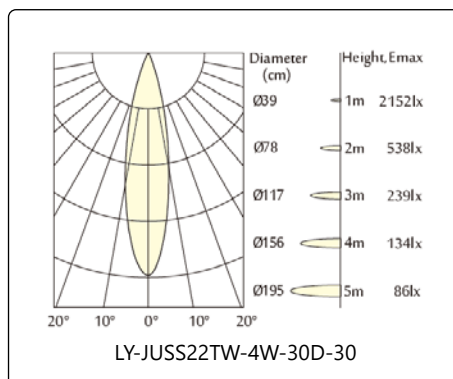
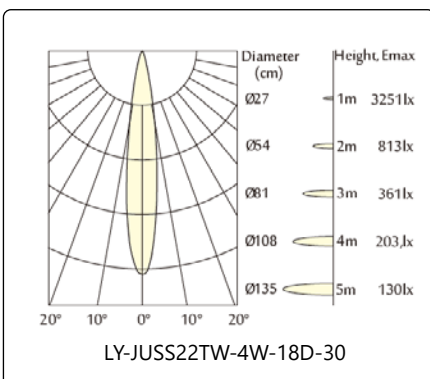
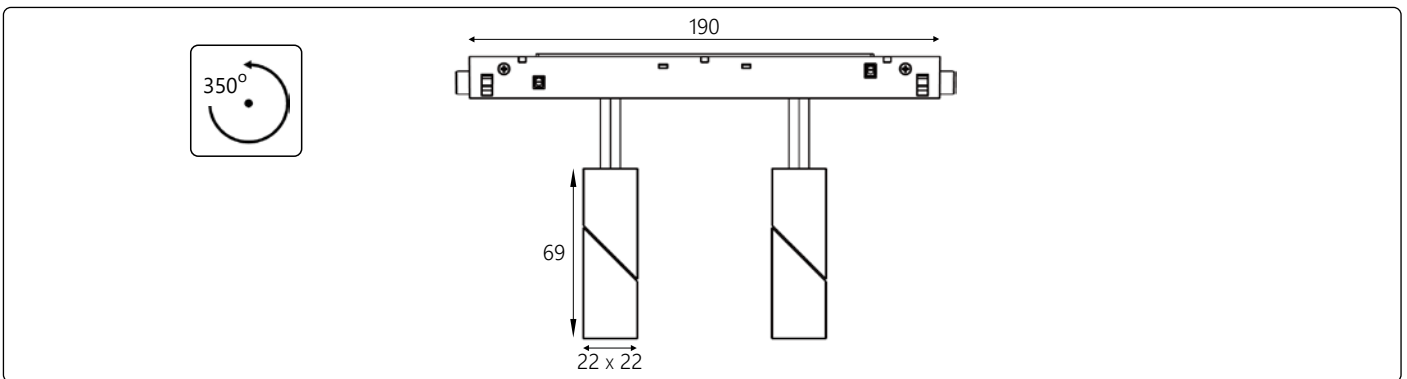
Product Code	LED Output (lm)	LED Power (W)	Efficiency (lm/W)	Input Voltage (V)	System Power (W)
LY-TR-JUSS22TW-4W-①-②-③-④-⑤	520	2 x 2	130	48	5

CUSTOMIZABLE SPECIFICATIONS

① Beam Angle	② Colour Temperature	③ Housing Colour	④ IP Rating	⑤ Dimming
15D 24D 35D	27 (2700K) 30 (3000K) 40 (4000K) 60 (6000K)	BK (Black) WH (White) GY (Grey)	IP20 IP54	ND (Non-Dimming) DA (Dali) D0 (0-10V)

(Example Code Format: LY-TR-JUSS22TW-4W-24D-40-BK-IP20-DA)

DIMENSIONS (MM) & LIGHT DISTRIBUTION



JUPITER

Low-Voltage Magnetic Track Series

Jupiter RS25



CRI 80 90 90+	PHASE	1-10V	DALI
2-3step McAdam <small>(optional)</small>	5 Years warranty	Operating Hours > 100,000	L70 > 50,000 Hours
UGR <19	OPERATION TEMP -20°C to 50°C!	RoHS	CE

SPECIFICATIONS

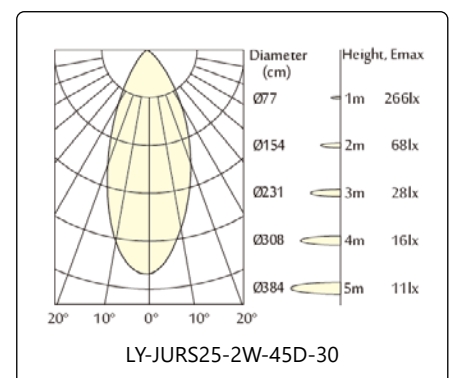
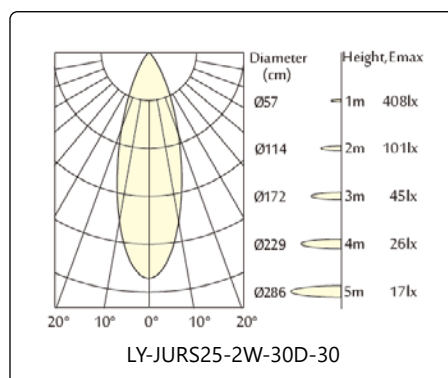
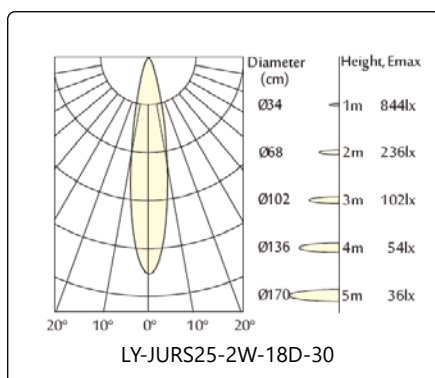
Product Code	LED Output (lm)	LED Power (W)	Efficiency (lm/W)	Input Voltage (V)	System Power (W)
LY-TR-JURS25-2W-①-②-③-④-⑤	260	2	130	48	3

CUSTOMIZABLE SPECIFICATIONS

① Beam Angle	② Colour Temperature	③ Housing Colour	④ IP Rating	⑤ Dimming
18D 30D 45D	27 (2700K) 30 (3000K) 40 (4000K) 60 (6000K)	BK (Black) WH (White) GY (Grey)	IP20 IP54	ND (Non-Dimming) DA (Dali) D0 (0-10V)

(Example Code Format: LY-TR-JURS25-2W-30D-40-BK-IP20-DA)

DIMENSIONS (MM) & LIGHT DISTRIBUTION



JUPITER

Low-Voltage Magnetic Track Series

Jupiter RS25 Twin



CRI 80 90 90+	PHASE	1-10V	DALI
2-3step McAdam <small>(optional)</small>	5 Years warranty	Operating Hours > 100,000	L70 > 50,000 Hours
UGR <19	OPERATION TEMP -20°C to 50°C!	RoHS	CE

SPECIFICATIONS

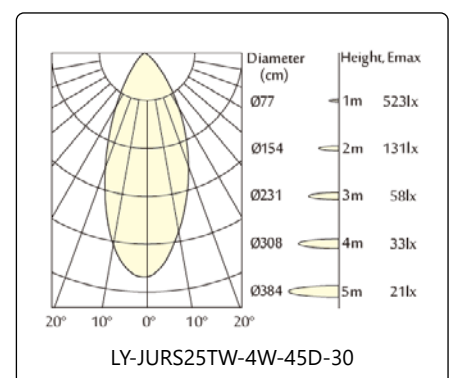
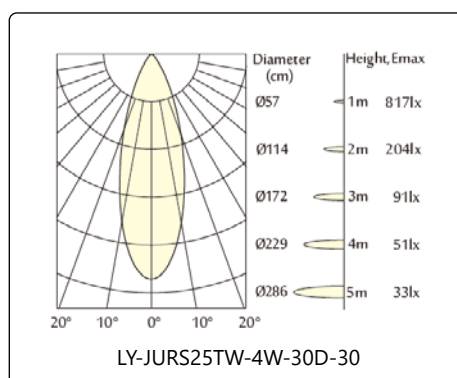
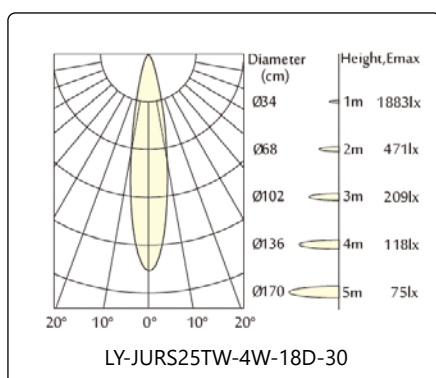
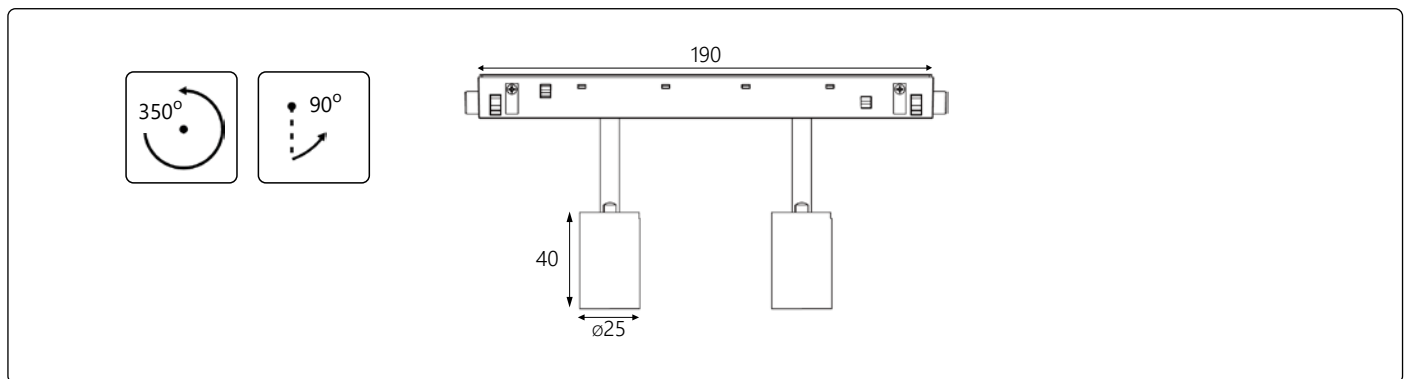
Product Code	LED Output (lm)	LED Power (W)	Efficiency (lm/W)	Input Voltage (V)	System Power (W)
LY-TR-JURS25TW-4W-①-②-③-④-⑤	520	2 x 2	130	48	5

CUSTOMIZABLE SPECIFICATIONS

① Beam Angle	② Colour Temperature	③ Housing Colour	④ IP Rating	⑤ Dimming
18D 30D 45D	27 (2700K) 30 (3000K) 40 (4000K) 60 (6000K)	BK (Black) WH (White) GY (Grey)	IP20 IP54	ND (Non-Dimming) DA (Dali) D0 (0-10V)

(Example Code Format: LY-TR-JURS25TW-4W-30D-40-BK-IP20-DA)

DIMENSIONS (MM) & LIGHT DISTRIBUTION



JUPITER

Low-Voltage Magnetic Track Series

Jupiter RS40 7.5W



CRI 80 90 90+	PHASE	1-10V	DALI
2-3step McAdam <small>(optional)</small>	5 Years warranty	Operating Hours > 100,000	L70 > 50,000 Hours
UGR <19	OPERATION TEMP -20°C to 50°C!	RoHS	CE

SPECIFICATIONS

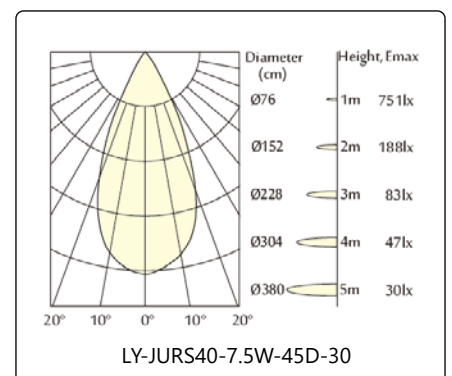
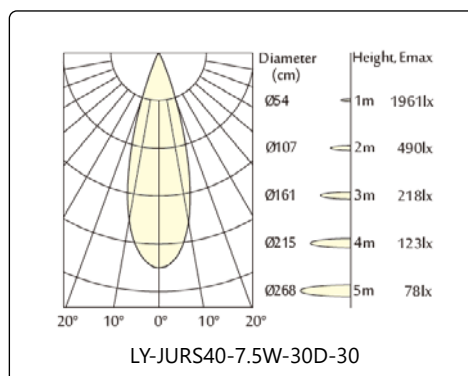
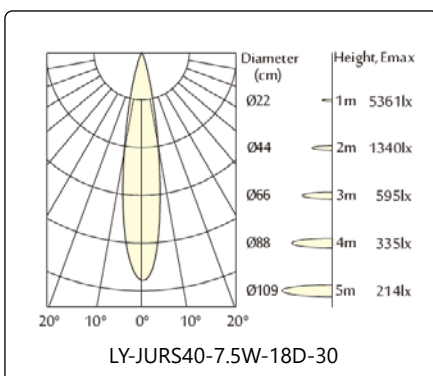
Product Code	LED Output (lm)	LED Power (W)	Efficiency (lm/W)	Input Voltage (V)	System Power (W)
LY-TR-JURS40-7.5W-①-②-③-④-⑤	825	7.5	110	48	8

CUSTOMIZABLE SPECIFICATIONS

① Beam Angle	② Colour Temperature	③ Housing Colour	④ IP Rating	⑤ Dimming
18D 30D 45D	27 (2700K) 30 (3000K) 40 (4000K) 60 (6000K)	BK (Black) WH (White) GY (Grey)	IP20 IP54	ND (Non-Dimming) DA (Dali) D0 (0-10V)

(Example Code Format: LY-TR-JURS40-7.5W-30D-40-BK-IP20-DA)

DIMENSIONS (MM) & LIGHT DISTRIBUTION



JUPITER

Low-Voltage Magnetic Track Series

Jupiter RS40 7.5W Twin



CRI 80 90 90+	PHASE	1-10V	DALI
2-3step McAdam <small>(optional)</small>	5 Years warranty	Operating Hours > 100,000	L70 > 50,000 Hours
UGR <19	OPERATION TEMP -20°C to 50°C!	RoHS	CE

SPECIFICATIONS

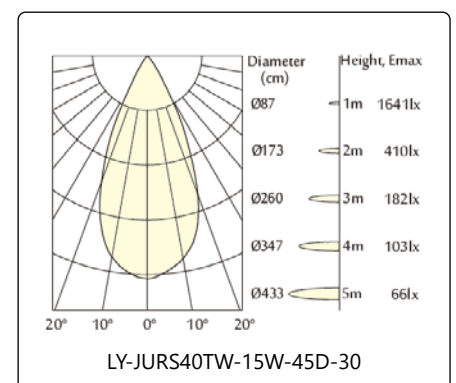
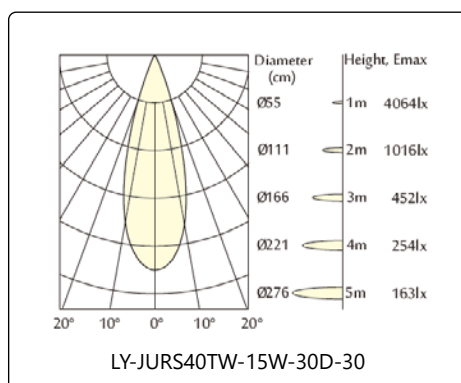
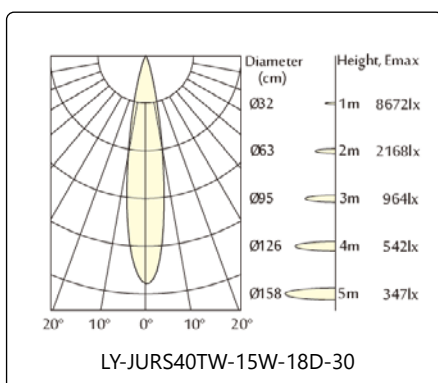
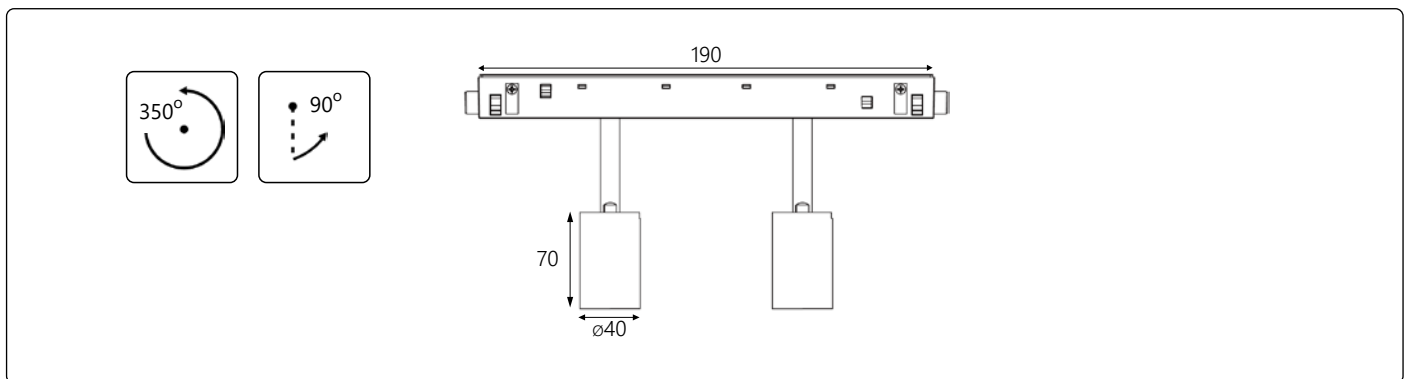
Product Code	LED Output (lm)	LED Power (W)	Efficiency (lm/W)	Input Voltage (V)	System Power (W)
LY-TR-JURS40TW-15W-①-②-③-④-⑤	1650	2 x 7.5	110	48	16

CUSTOMIZABLE SPECIFICATIONS

① Beam Angle	② Colour Temperature	③ Housing Colour	④ IP Rating	⑤ Dimming
18D 30D 45D	27 (2700K) 30 (3000K) 40 (4000K) 60 (6000K)	BK (Black) WH (White) GY (Grey)	IP20 IP54	ND (Non-Dimming) DA (Dali) D0 (0-10V)

(Example Code Format: LY-TR-JURS40TW-15W-30D-40-BK-IP20-DA)

DIMENSIONS (MM) & LIGHT DISTRIBUTION



JUPITER

Low-Voltage Magnetic Track Series

Jupiter RS40 11W



CRI 80 90 90+	PHASE	1-10V	DALI
2-3step McAdam <small>(optional)</small>	5 Years warranty	Operating Hours > 100,000	L70 > 50,000 Hours
UGR <19	OPERATION TEMP -20°C to 50°C!	RoHS	CE

SPECIFICATIONS

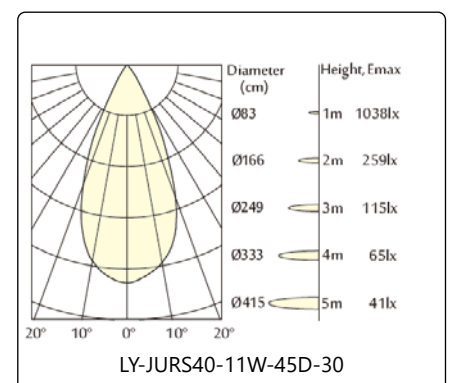
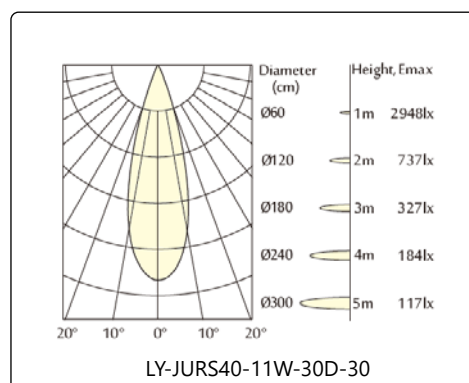
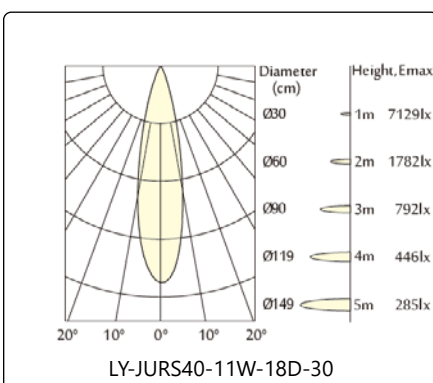
Product Code	LED Output (lm)	LED Power (W)	Efficiency (lm/W)	Input Voltage (V)	System Power (W)
LY-TR-JURS40-11W-①-②-③-④-⑤	1100	11	100	48	12

CUSTOMIZABLE SPECIFICATIONS

① Beam Angle	② Colour Temperature	③ Housing Colour	④ IP Rating	⑤ Dimming
18D 30D 45D	27 (2700K) 30 (3000K) 40 (4000K) 60 (6000K)	BK (Black) WH (White) GY (Grey)	IP20 IP54	ND (Non-Dimming) DA (Dali) D0 (0-10V)

(Example Code Format: LY-TR-JURS40-11W-30D-40-BK-IP20-DA)

DIMENSIONS (MM) & LIGHT DISTRIBUTION



JUPITER

Low-Voltage Magnetic Track Series

Jupiter RS40 11W Twin



CRI 80 90 90+	PHASE	1-10V	DALI
2-3step McAdam <small>(optional)</small>	5 Years warranty	Operating Hours > 100,000	L70 > 50,000 Hours
UGR <19	OPERATION TEMP -20°C to 50°C!	RoHS	CE

SPECIFICATIONS

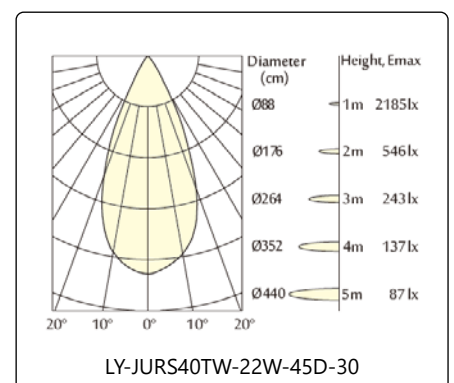
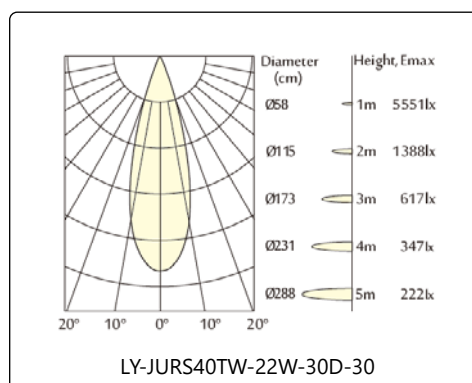
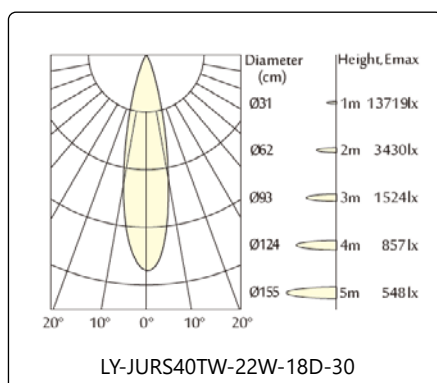
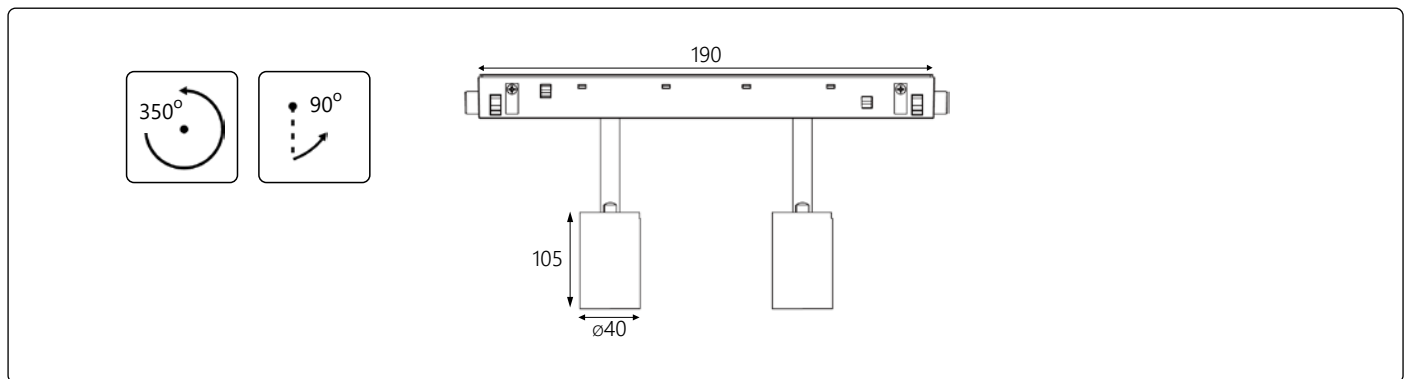
Product Code	LED Output (lm)	LED Power (W)	Efficiency (lm/W)	Input Voltage (V)	System Power (W)
LY-TR-JURS40TW-22W-①-②-③-④-⑤	2200	2 x 11	100	48	24

CUSTOMIZABLE SPECIFICATIONS

① Beam Angle	② Colour Temperature	③ Housing Colour	④ IP Rating	⑤ Dimming
18D 30D 45D	27 (2700K) 30 (3000K) 40 (4000K) 60 (6000K)	BK (Black) WH (White) GY (Grey)	IP20 IP54	ND (Non-Dimming) DA (Dali) D0 (0-10V)

(Example Code Format: LY-TR-JURS40TW-22W-30D-40-BK-IP20-DA)

DIMENSIONS (MM) & LIGHT DISTRIBUTION



JUPITER

Low-Voltage Magnetic Track Series

Jupiter ZS55 (Beam Focusing)



CRI 80 90 90+	PHASE	1-10V	DALI
2-3step McAdam <small>(optional)</small>	5 Years warranty	Operating Hours > 100,000	L70 > 50,000 Hours
UGR <19	OPERATION TEMP -20°C to 50°C!	RoHS	CE

SPECIFICATIONS

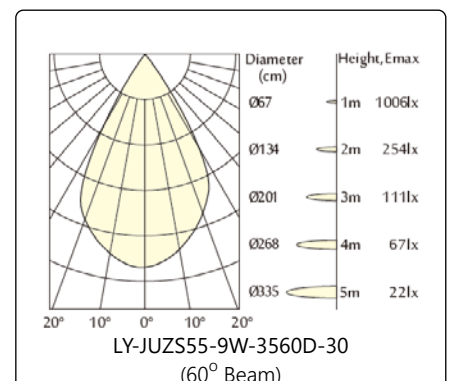
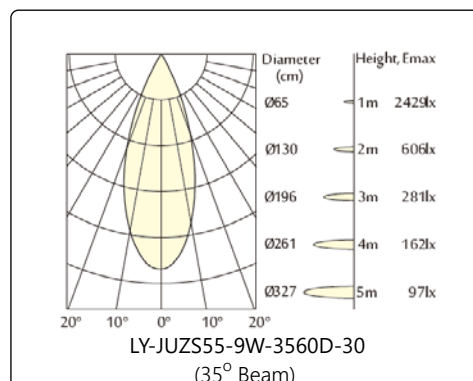
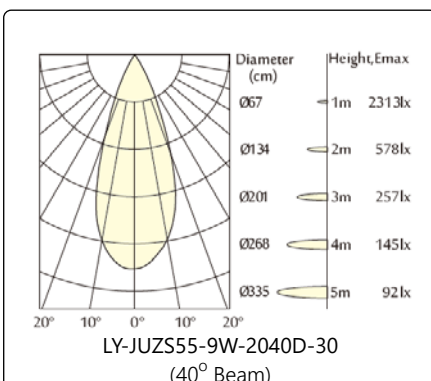
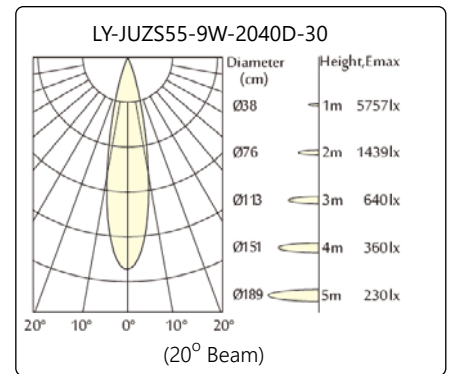
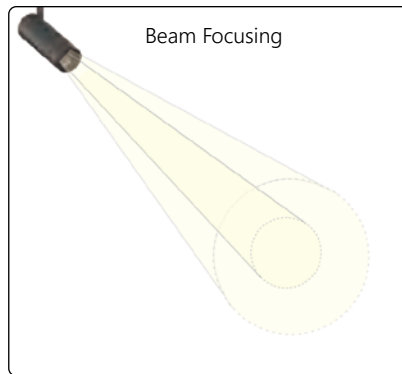
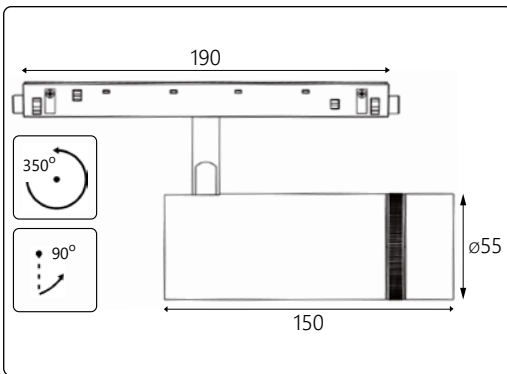
Product Code	LED Output (lm)	LED Power (W)	Efficiency (lm/W)	Input Voltage (V)	System Power (W)
LY-TR-JUZS55-9W-①-②-③-④-⑤	990	9	110	48	10

CUSTOMIZABLE SPECIFICATIONS

① Beam Angle	② Colour Temperature	③ Housing Colour	④ IP Rating	⑤ Dimming
2040D (20°- 40°) 3560D (35°- 60°)	27 (2700K) 30 (3000K) 40 (4000K) 60 (6000K)	BK (Black) WH (White) GY (Grey)	IP20 IP54	ND (Non-Dimming) DA (Dali) D0 (0-10V)

(Example Code Format: LY-TR-JUZS55-9W-2040D-40-BK-IP20-DA)

DIMENSIONS (MM) & LIGHT DISTRIBUTION



JUPITER

Low-Voltage Magnetic Track Series

Jupiter Linear Module 2 (Square)



CRI 80 90 90+	PHASE	1-10V	DALI
2-3step McAdam <small>(optional)</small>	5 Years warranty	Operating Hours > 100,000	L70 > 50,000 Hours
UGR < 19	OPERATION TEMP -20°C to 50°C!	RoHS	CE

SPECIFICATIONS

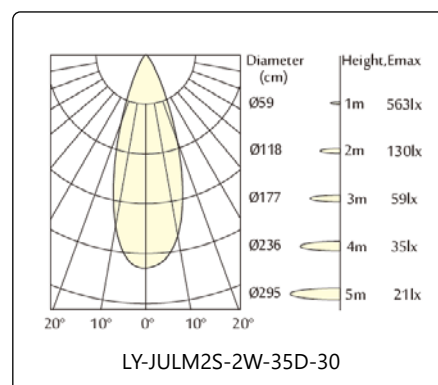
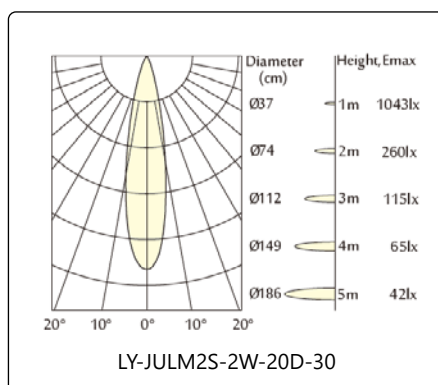
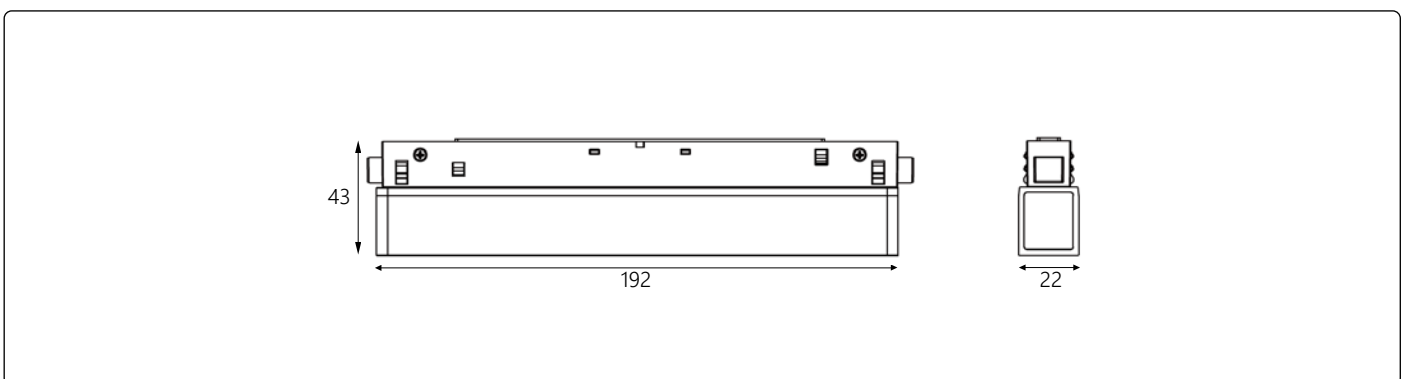
Product Code	LED Output (lm)	LED Power (W)	Efficiency (lm/W)	Input Voltage (V)	System Power (W)
LY-TR-JULM2S-2W-①-②-③-④-⑤	280	2	140	48	3

CUSTOMIZABLE SPECIFICATIONS

① Beam Angle	② Colour Temperature	③ Housing Colour	④ IP Rating	⑤ Dimming
20D 35D	27 (2700K) 30 (3000K) 40 (4000K) 60 (6000K)	BK (Black) WH (White) GY (Grey)	IP20 IP54	ND (Non-Dimming) DA (Dali) D0 (0-10V)

(Example Code Format: LY-TR-JULM2S-2W-20D-40-BK-IP20-DA)

DIMENSIONS (MM) & LIGHT DISTRIBUTION



JUPITER

Low-Voltage Magnetic Track Series

Jupiter Linear Module 2 (Round)



CRI 80 90 90+	PHASE	1-10V	DALI
2-3step McAdam <small>(optional)</small>	5 Years warranty	Operating Hours > 100,000	L70 > 50,000 Hours
UGR <19	OPERATION TEMP -20°C to 50°C!	RoHS	CE

SPECIFICATIONS

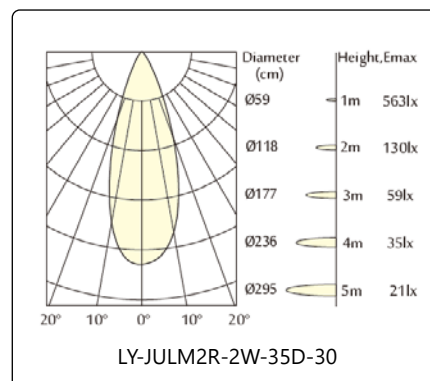
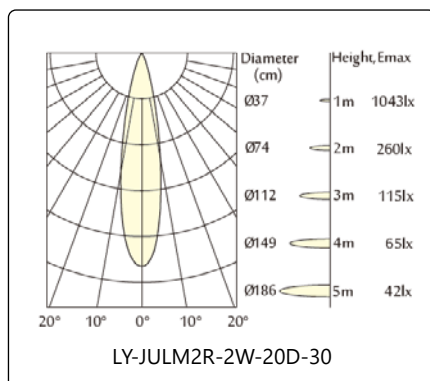
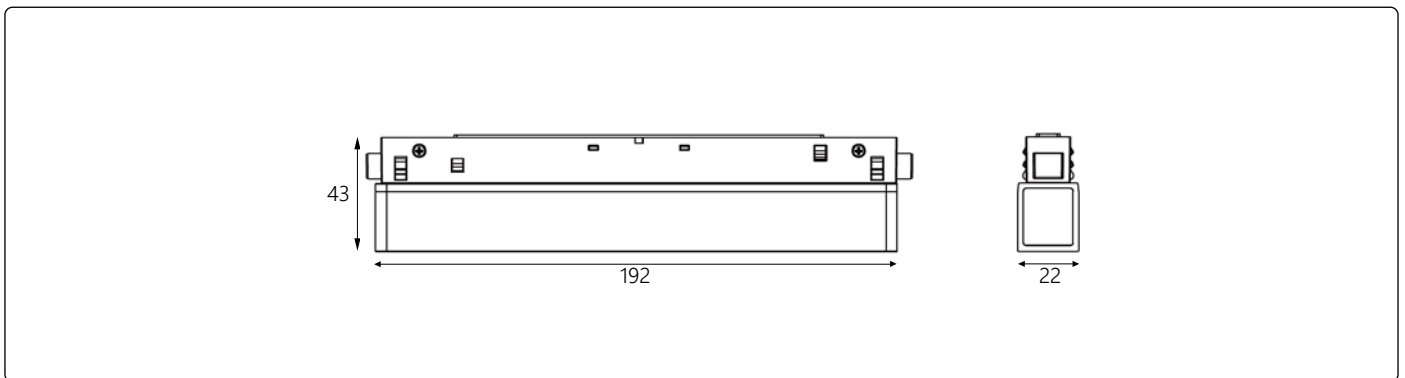
Product Code	LED Output (lm)	LED Power (W)	Efficiency (lm/W)	Input Voltage (V)	System Power (W)
LY-TR-JULM2R-2W-①-②-③-④-⑤	280	2	140	48	3

CUSTOMIZABLE SPECIFICATIONS

① Beam Angle	② Colour Temperature	③ Housing Colour	④ IP Rating	⑤ Dimming
20D 35D	27 (2700K) 30 (3000K) 40 (4000K) 60 (6000K)	BK (Black) WH (White) GY (Grey)	IP20 IP54	ND (Non-Dimming) DA (Dali) D0 (0-10V)

(Example Code Format: LY-TR-JULM2R-2W-20D-40-BK-IP20-DA)

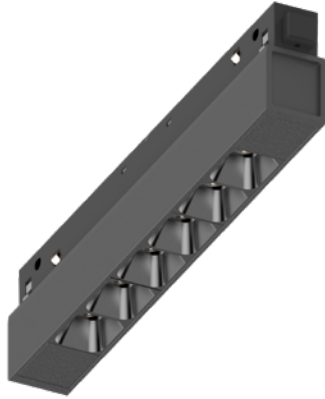
DIMENSIONS (MM) & LIGHT DISTRIBUTION



JUPITER

Low-Voltage Magnetic Track Series

Jupiter Linear Module 6 (Square)



CRI 80 90 90+	PHASE	1-10V	DALI
2-3step McAdam <small>(optional)</small>	5 Years warranty	Operating Hours > 100,000	L70 > 50,000 Hours
UGR <19	OPERATION TEMP -20°C to 50°C!	RoHS	CE

SPECIFICATIONS

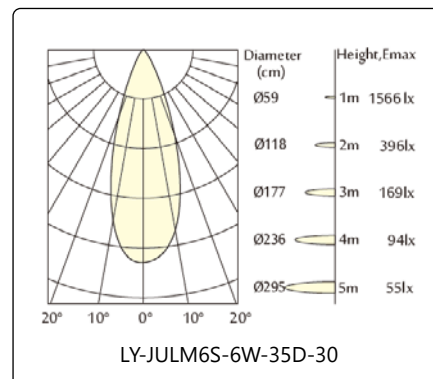
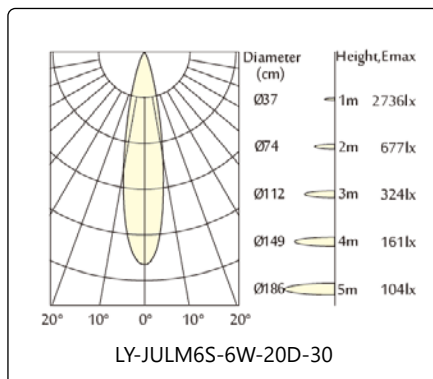
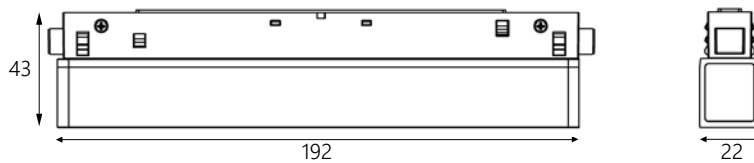
Product Code	LED Output (lm)	LED Power (W)	Efficiency (lm/W)	Input Voltage (V)	System Power (W)
LY-TR-JULM6S-6W-①-②-③-④-⑤	840	6	140	48	7

CUSTOMIZABLE SPECIFICATIONS

① Beam Angle	② Colour Temperature	③ Housing Colour	④ IP Rating	⑤ Dimming
20D 35D	27 (2700K) 30 (3000K) 40 (4000K) 60 (6000K)	BK (Black) WH (White) GY (Grey)	IP20 IP54	ND (Non-Dimming) DA (Dali) D0 (0-10V)

(Example Code Format: LY-TR-JULM6S-6W-20D-40-BK-IP20-DA)

DIMENSIONS (MM) & LIGHT DISTRIBUTION



JUPITER

Low-Voltage Magnetic Track Series

Jupiter Linear Module 6 (Round)



CRI 80 90 90+	PHASE	1-10V	DALI
2-3step McAdam <small>(optional)</small>	5 Years warranty	Operating Hours > 100,000	L70 > 50,000 Hours
UGR <19	OPERATION TEMP -20°C to 50°C!	RoHS	CE

SPECIFICATIONS

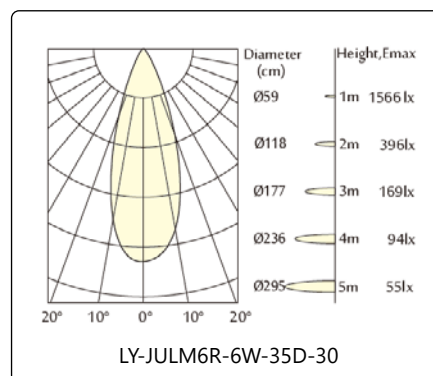
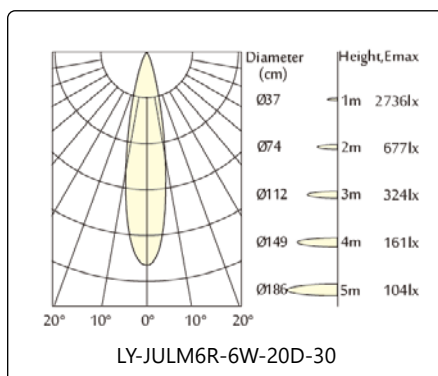
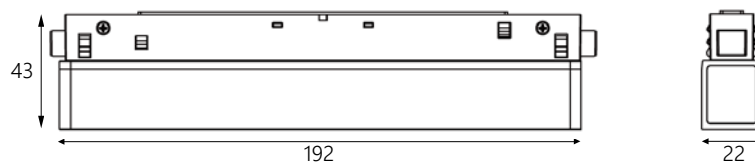
Product Code	LED Output (lm)	LED Power (W)	Efficiency (lm/W)	Input Voltage (V)	System Power (W)
LY-TR-JULM6R-6W-①-②-③-④-⑤	840	6	140	48	7

CUSTOMIZABLE SPECIFICATIONS

① Beam Angle	② Colour Temperature	③ Housing Colour	④ IP Rating	⑤ Dimming
20D 35D	27 (2700K) 30 (3000K) 40 (4000K) 60 (6000K)	BK (Black) WH (White) GY (Grey)	IP20 IP54	ND (Non-Dimming) DA (Dali) D0 (0-10V)

(Example Code Format: LY-TR-JULM6R-6W-20D-40-BK-IP20-DA)

DIMENSIONS (MM) & LIGHT DISTRIBUTION



JUPITER

Low-Voltage Magnetic Track Series

Jupiter Linear Module 8

(Square)



CRI 80 90 90+	PHASE	1-10V	DALI
2-3step McAdam <small>(optional)</small>	5 Years warranty	Operating Hours > 100,000	L70 > 50,000 Hours
UGR <19	OPERATION TEMP -20°C to 50°C!	RoHS	CE

SPECIFICATIONS

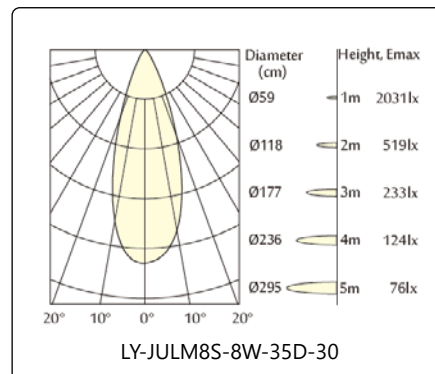
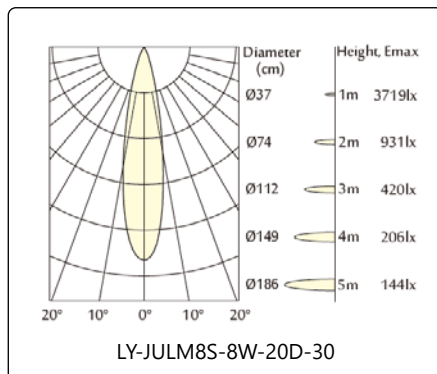
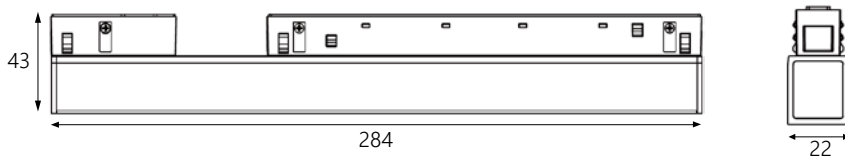
Product Code	LED Output (lm)	LED Power (W)	Efficiency (lm/W)	Input Voltage (V)	System Power (W)
LY-TR-JULM8S-8W-①-②-③-④-⑤	1120	8	140	48	9

CUSTOMIZABLE SPECIFICATIONS

① Beam Angle	② Colour Temperature	③ Housing Colour	④ IP Rating	⑤ Dimming
20D 35D	27 (2700K) 30 (3000K) 40 (4000K) 60 (6000K)	BK (Black) WH (White) GY (Grey)	IP20 IP54	ND (Non-Dimming) DA (Dali) D0 (0-10V)

(Example Code Format: LY-TR-JULM8S-8W-20D-40-BK-IP20-DA)

DIMENSIONS (MM) & LIGHT DISTRIBUTION



JUPITER

Low-Voltage Magnetic Track Series

Jupiter Linear Module 8 (Round)



CRI 80 90 90+	PHASE	1-10V	DALI
2-3step McAdam <small>(optional)</small>	5 Years warranty	Operating Hours > 100,000	L70 > 50,000 Hours
UGR <19	OPERATION TEMP -20°C to 50°C!	RoHS	CE

SPECIFICATIONS

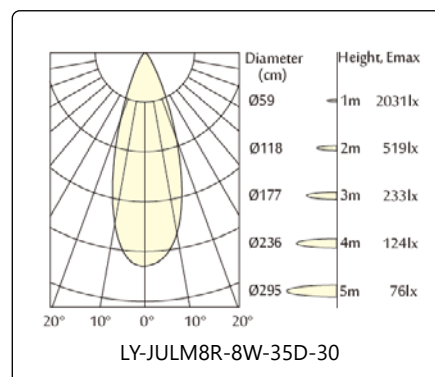
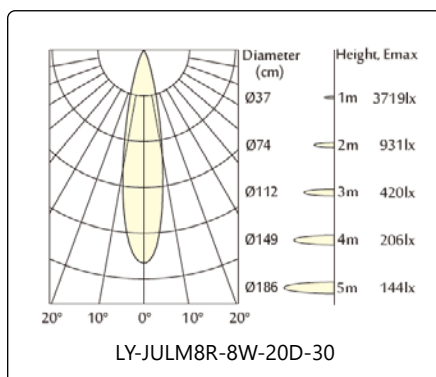
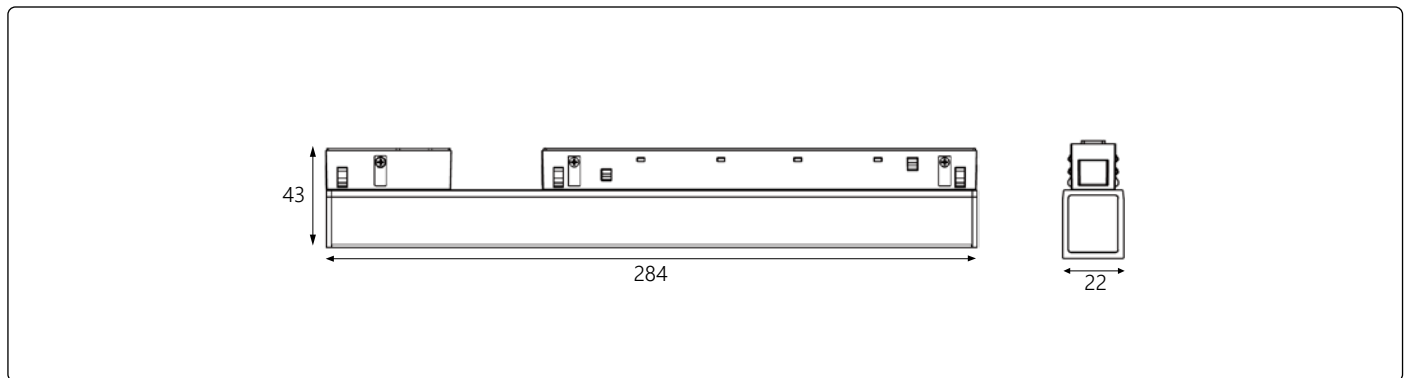
Product Code	LED Output (lm)	LED Power (W)	Efficiency (lm/W)	Input Voltage (V)	System Power (W)
LY-TR-JULM8R-8W-①-②-③-④-⑤	1120	8	140	48	9

CUSTOMIZABLE SPECIFICATIONS

① Beam Angle	② Colour Temperature	③ Housing Colour	④ IP Rating	⑤ Dimming
20D 35D	27 (2700K) 30 (3000K) 40 (4000K) 60 (6000K)	BK (Black) WH (White) GY (Grey)	IP20 IP54	ND (Non-Dimming) DA (Dali) D0 (0-10V)

(Example Code Format: LY-TR-JULM8R-8W-20D-40-BK-IP20-DA)

DIMENSIONS (MM) & LIGHT DISTRIBUTION



JUPITER

Low-Voltage Magnetic Track Series

Jupiter Linear Module 12 (Square)



CRI 80 90 90+	PHASE	1-10V	DALI
2-3step McAdam <small>(optional)</small>	5 Years warranty	Operating Hours > 100,000	L70 > 50,000 Hours
UGR <19	OPERATION TEMP -20°C to 50°C!	RoHS	CE

SPECIFICATIONS

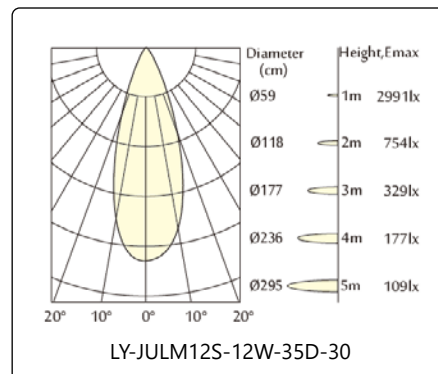
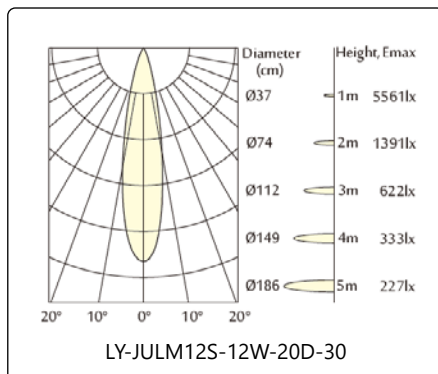
Product Code	LED Output (lm)	LED Power (W)	Efficiency (lm/W)	Input Voltage (V)	System Power (W)
LY-TR-JULM12S-12W-①-②-③-④-⑤	1680	12	140	48	13

CUSTOMIZABLE SPECIFICATIONS

① Beam Angle	② Colour Temperature	③ Housing Colour	④ IP Rating	⑤ Dimming
20D 35D	27 (2700K) 30 (3000K) 40 (4000K) 60 (6000K)	BK (Black) WH (White) GY (Grey)	IP20 IP54	ND (Non-Dimming) DA (Dali) D0 (0-10V)

(Example Code Format: LY-TR-JULM12S-12W-20D-40-BK-IP20-DA)

DIMENSIONS (MM) & LIGHT DISTRIBUTION



JUPITER

Low-Voltage Magnetic Track Series

Jupiter Linear Module 12 (Round)



CRI 80 90 90+	PHASE	1-10V	DALI
2-3step McAdam <small>(optional)</small>	5 Years warranty	Operating Hours > 100,000	L70 > 50,000 Hours
UGR <19	OPERATION TEMP -20°C to 50°C!	RoHS	CE

SPECIFICATIONS

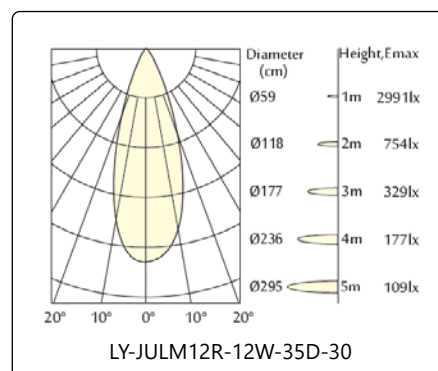
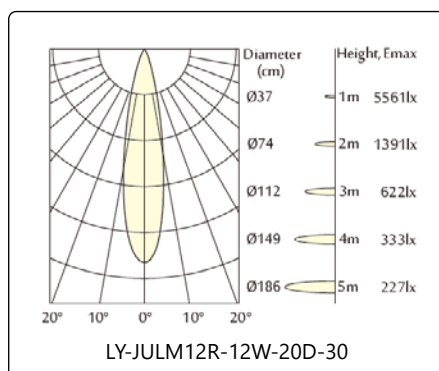
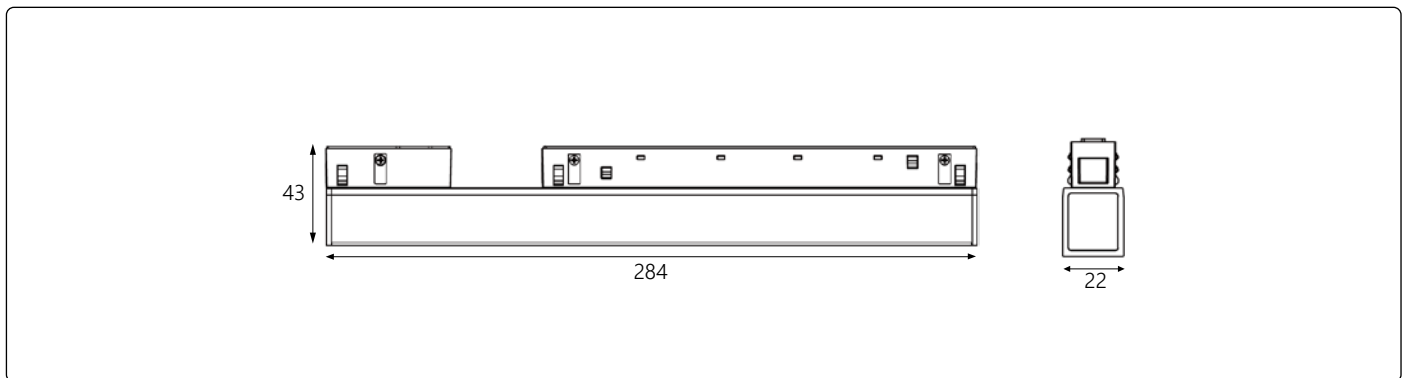
Product Code	LED Output (lm)	LED Power (W)	Efficiency (lm/W)	Input Voltage (V)	System Power (W)
LY-TR-JULM12R-12W-①-②-③-④-⑤	1680	12	140	48	13

CUSTOMIZABLE SPECIFICATIONS

① Beam Angle	② Colour Temperature	③ Housing Colour	④ IP Rating	⑤ Dimming
20D 35D	27 (2700K) 30 (3000K) 40 (4000K) 60 (6000K)	BK (Black) WH (White) GY (Grey)	IP20 IP54	ND (Non-Dimming) DA (Dali) D0 (0-10V)

(Example Code Format: LY-TR-JULM12R-12W-20D-40-BK-IP20-DA)

DIMENSIONS (MM) & LIGHT DISTRIBUTION

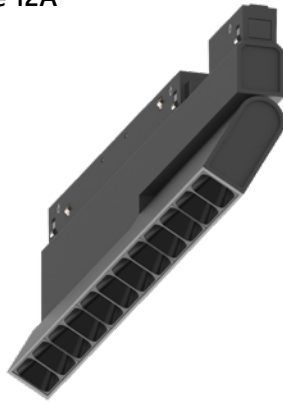


JUPITER

Low-Voltage Magnetic Track Series

Jupiter Linear Module 12A

(Square Adjustable)



Adjustable Beam 90°	CRI 80 90 90+	PHASE	1-10V	DALI
	2-3step McAdam <small>(optional)</small>	5 Years warranty	Operating Hours > 100,000	L70 > 50,000 Hours
	UGR <19	OPERATION TEMP -20°C to 50°C!	RoHS	CE

SPECIFICATIONS

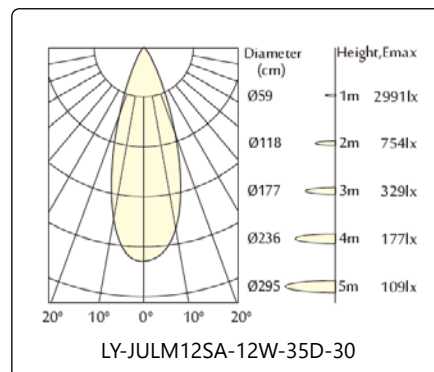
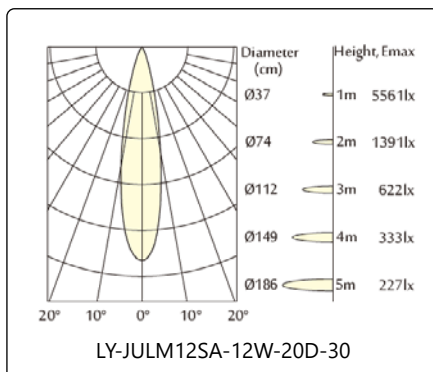
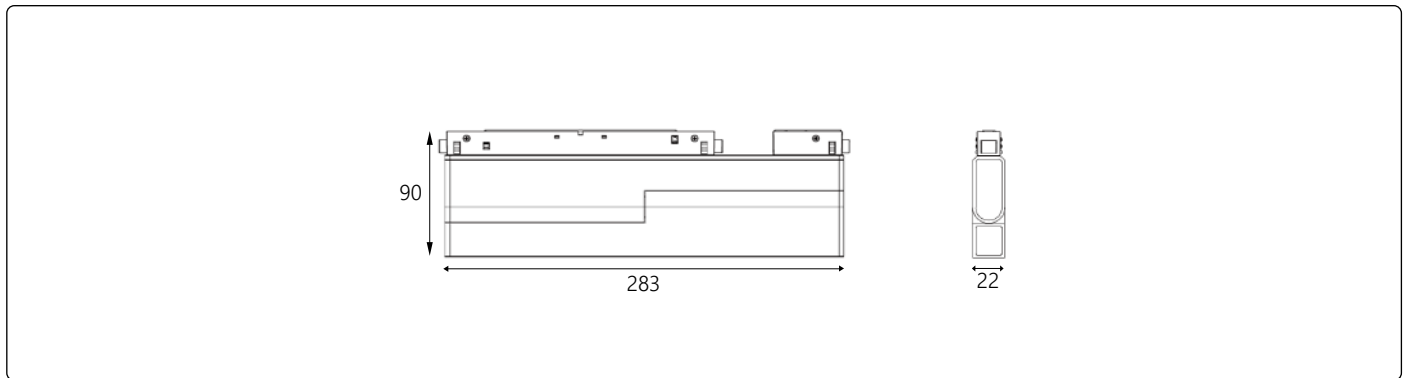
Product Code	LED Output (lm)	LED Power (W)	Efficiency (lm/W)	Input Voltage (V)	System Power (W)
LY-TR-JULM12SA-12W-①-②-③-④-⑤	1680	12	140	48	13

CUSTOMIZABLE SPECIFICATIONS

① Beam Angle	② Colour Temperature	③ Housing Colour	④ IP Rating	⑤ Dimming
20D 35D	27 (2700K) 30 (3000K) 40 (4000K) 60 (6000K)	BK (Black) WH (White) GY (Grey)	IP20 IP54	ND (Non-Dimming) DA (Dali) D0 (0-10V)

(Example Code Format: LY-TR-JULM12SA-12W-20D-40-BK-IP20-DA)

DIMENSIONS (MM) & LIGHT DISTRIBUTION



JUPITER

Low-Voltage Magnetic Track Series

Jupiter Strip Module 65

(Prismatic Diffuser)



CRI 80 90 90+	PHASE	1-10V	DALI
2-3step McAdam <small>(optional)</small>	5 Years warranty	Operating Hours > 100,000	L70 > 50,000 Hours
UGR <19	OPERATION TEMP -20°C to 50°C!	RoHS	CE

SPECIFICATIONS

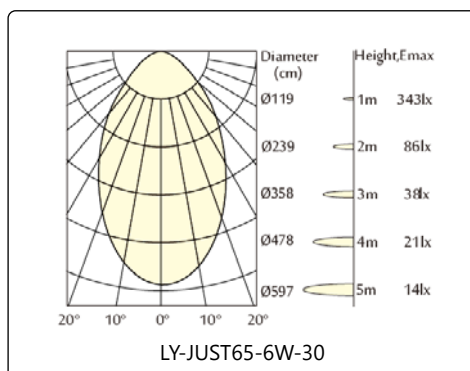
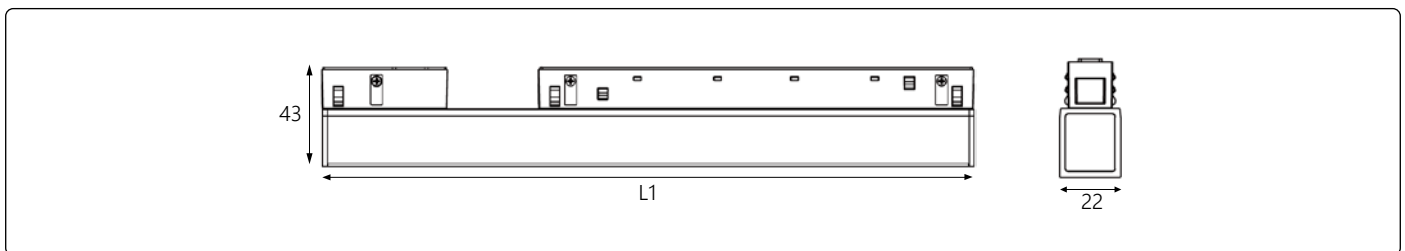
Product Code	LED Output (lm)	LED Power (W)	Efficiency (lm/W)	Input Voltage (V)	System Power (W)	Beam Angle (°)	Module Length - L1 (mm)
LY-TR-JUST65-6W-①-②-③-④	660	6	110	48	7	65	284
LY-TR-JUST65-12W-①-②-③-④	1320	12	110	48	13	65	560
LY-TR-JUST65-18W-①-②-③-④	1980	18	110	48	19	65	840
LY-TR-JUST65-24W-①-②-③-④	2640	24	110	48	26	65	1120

CUSTOMIZABLE SPECIFICATIONS

① Colour Temperature	② Housing Colour	③ IP Rating	④ Dimming
27 (2700K) 30 (3000K) 40 (4000K) 60 (6000K)	BK (Black) WH (White) GY (Grey)	IP20 IP54	ND (Non-Dimming) DA (Dali) D0 (0-10V)

(Example Code Format: LY-TR-JUST65-6W-40-BK-IP20-DA)

DIMENSIONS (MM) & LIGHT DISTRIBUTION

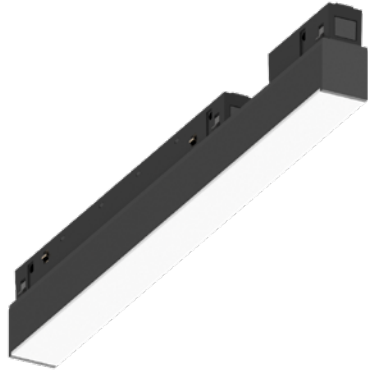


JUPITER

Low-Voltage Magnetic Track Series

Jupiter Strip Module 110

(Standard Diffuser)



CRI 80 90 90+	PHASE	1-10V	DALI
2-3step McAdam <small>(optional)</small>	5 Years warranty	Operating Hours > 100,000	L70 > 50,000 Hours
UGR <19	OPERATION TEMP -20°C to 50°C!	RoHS	CE

SPECIFICATIONS

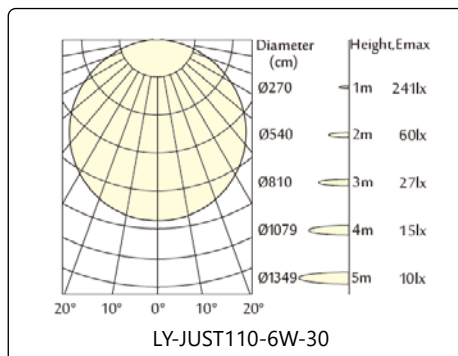
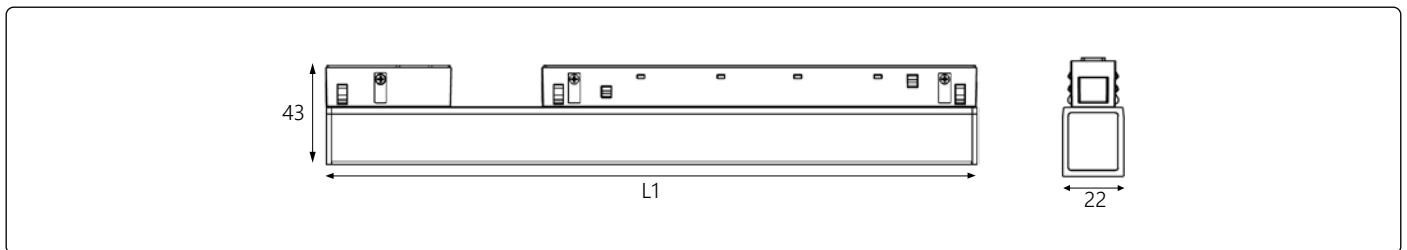
Product Code	LED Output (lm)	LED Power (W)	Efficiency (lm/W)	Input Voltage (V)	System Power (W)	Beam Angle (°)	Module Length - L1 (mm)
LY-TR-JUST110-6W-①-②-③-④	660	6	110	48	7	110	284
LY-TR-JUST110-12W-①-②-③-④	1320	12	110	48	13	110	560
LY-TR-JUST110-18W-①-②-③-④	1980	18	110	48	19	110	840
LY-TR-JUST110-24W-①-②-③-④	2640	24	110	48	26	110	1120

CUSTOMIZABLE SPECIFICATIONS

① Colour Temperature	② Housing Colour	③ IP Rating	④ Dimming
27 (2700K) 30 (3000K) 40 (4000K) 60 (6000K)	BK (Black) WH (White) GY (Grey)	IP20 IP54	ND (Non-Dimming) DA (Dali) D0 (0-10V)

(Example Code Format: LY-TR-JUST110-6W-40-BK-IP20-DA)

DIMENSIONS (MM) & LIGHT DISTRIBUTION

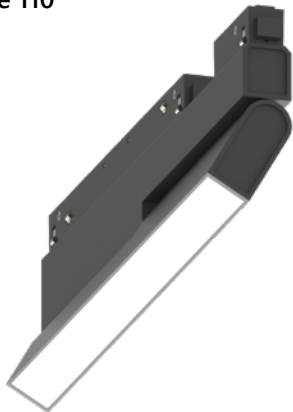


JUPITER

Low-Voltage Magnetic Track Series

Jupiter Strip Module 110

(Adjustable)



 Adjustable Beam	CRI 80 90 90+	 PHASE	 1-10V	 DALI
2-3step McAdam <small>(optional)</small>	5 Years warranty	Operating Hours > 100,000	L70 > 50,000 Hours	
UGR <19	OPERATION TEMP -20°C to 50°C!			

SPECIFICATIONS

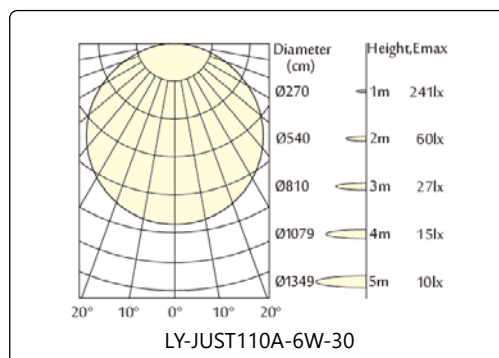
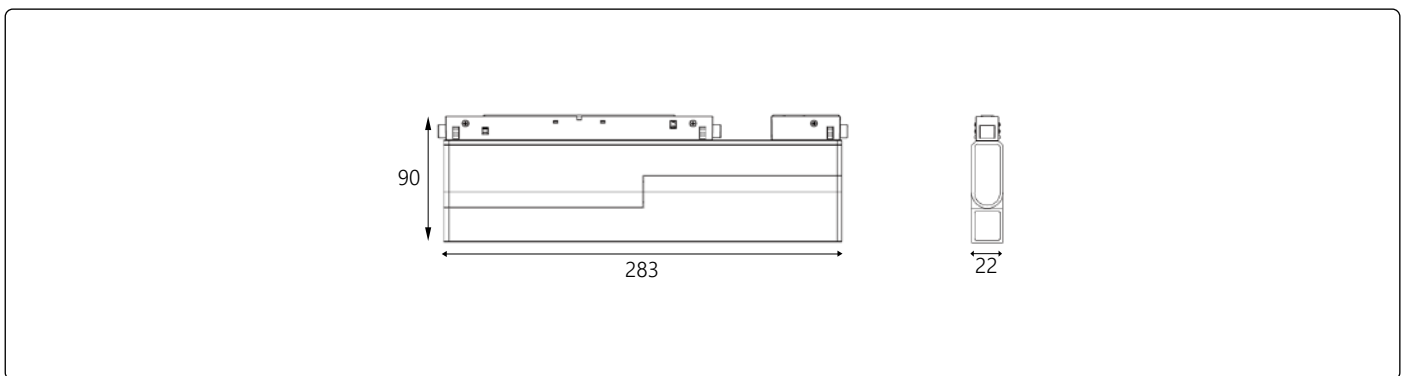
Product Code	LED Output (lm)	LED Power (W)	Efficiency (lm/W)	Input Voltage (V)	System Power (W)	Beam Angle (°)
LY-TR-JUST110A-6W-①-②-③-④	660	6	110	48	7	110

CUSTOMIZABLE SPECIFICATIONS

① Colour Temperature	② Housing Colour	③ IP Rating	④ Dimming
27 (2700K) 30 (3000K) 40 (4000K) 60 (6000K)	BK (Black) WH (White) GY (Grey)	IP20 IP54	ND (Non-Dimming) DA (Dali) D0 (0-10V)

(Example Code Format: LY-TR-JUST110A-6W-40-BK-IP20-DA)

DIMENSIONS (MM) & LIGHT DISTRIBUTION



JUPITER

Low-Voltage Magnetic Track Series

Jupiter Strip Module WW

(Wall Washer)



<p>Adjustable Wall Washer</p>	<p>CRI 80 90 90+</p>	<p>PHASE</p>	<p>1-10V</p>	<p>DALI</p>
	<p>2-3step McAdam <small>(optional)</small></p>	<p>5 Years warranty</p>	<p>Operating Hours > 100,000</p>	<p>L70 > 50,000 Hours</p>
<p>UGR <19</p>	<p>OPERATION TEMP -20°C to 50°C!</p>	<p>RoHS</p>	<p>CE</p>	

SPECIFICATIONS

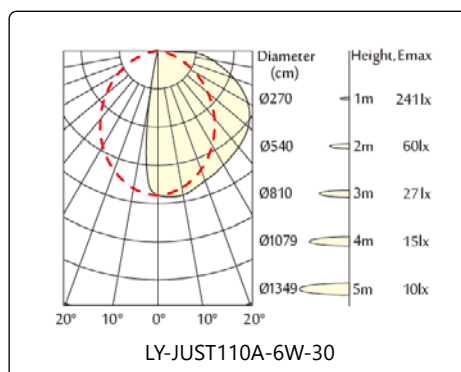
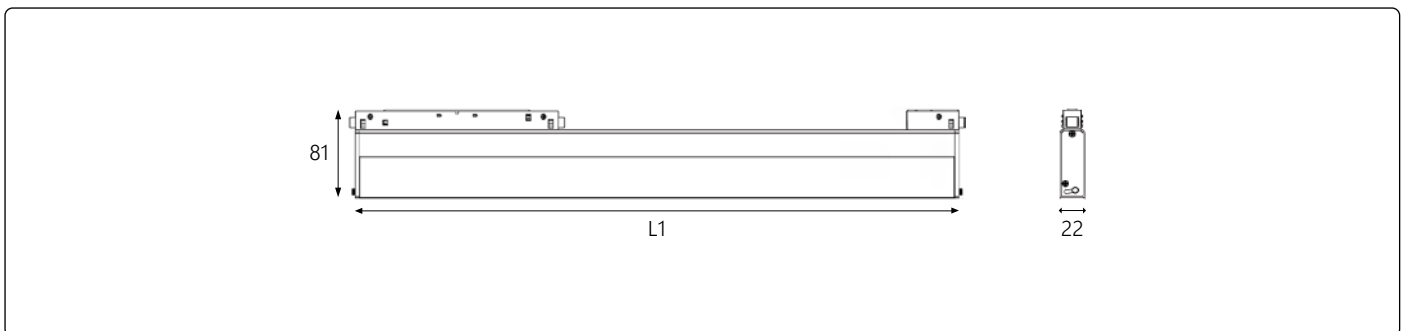
Product Code	LED Output (lm)	LED Power (W)	Efficiency (lm/W)	Input Voltage (V)	System Power (W)	Module Length L1 (mm)
LY-TR-JUSTWW-6W-①-②-③-④	660	6	110	48	7	290
LY-TR-JUSTWW-12W-①-②-③-④	1320	12	110	48	13	570

CUSTOMIZABLE SPECIFICATIONS

① Colour Temperature	② Housing Colour	③ IP Rating	④ Dimming
27 (2700K) 30 (3000K) 40 (4000K) 60 (6000K)	BK (Black) WH (White) GY (Grey)	IP20 IP54	ND (Non-Dimming) DA (Dali) D0 (0-10V)

(Example Code Format: LY-TR-JUSTWW-6W-40-BK-IP20-DA)

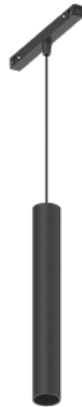
DIMENSIONS (MM) & LIGHT DISTRIBUTION



JUPITER

Low-Voltage Magnetic Track Series

Jupiter Pendant Module 40



CRI 80 90 90+	PHASE	1-10V	DALI
2-3step McAdam <small>(optional)</small>	5 Years warranty	Operating Hours > 100,000	L70 > 50,000 Hours
UGR <19	OPERATION TEMP -20°C to 50°C!	RoHS	CE

SPECIFICATIONS

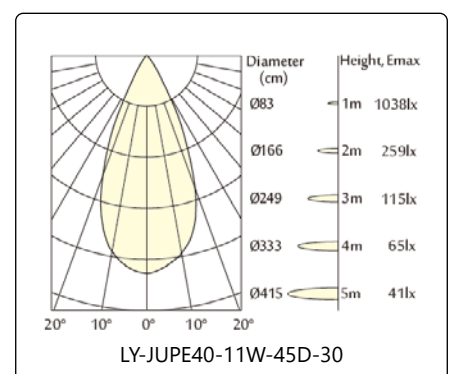
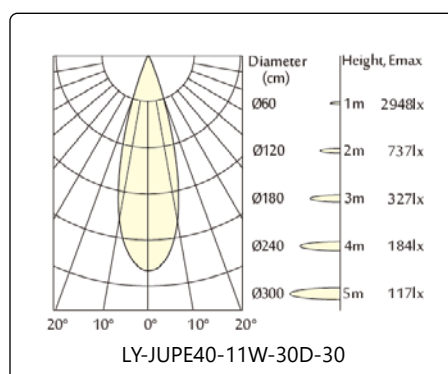
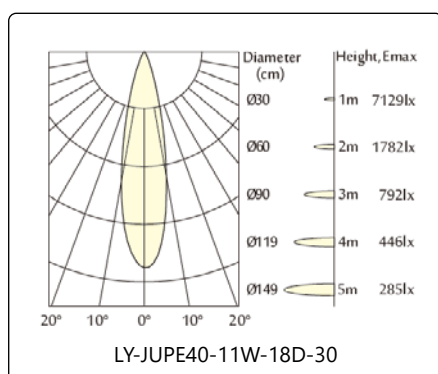
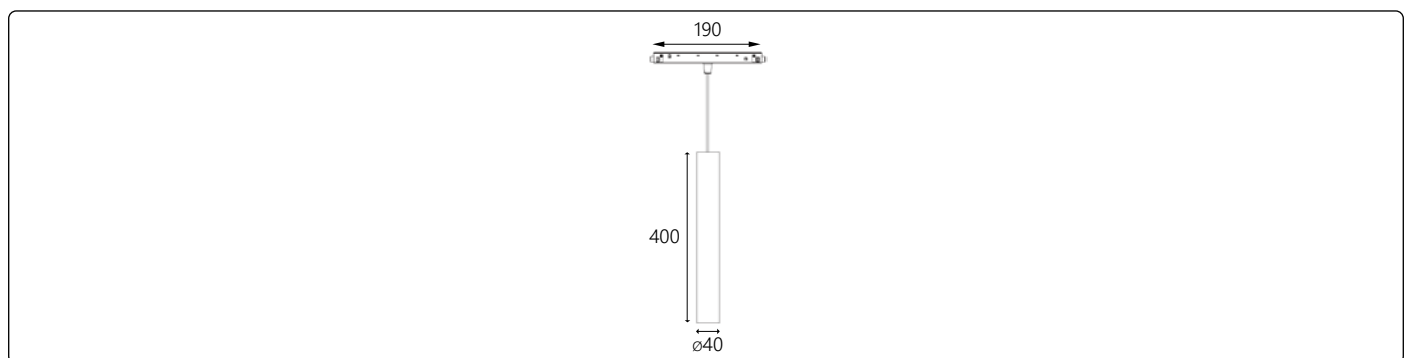
Product Code	LED Output (lm)	LED Power (W)	Efficiency (lm/W)	Input Voltage (V)	System Power (W)
LY-TR-JUPE40-11W-①-②-③-④-⑤	1100	11	100	48	12

CUSTOMIZABLE SPECIFICATIONS

① Beam Angle	② Colour Temperature	③ Housing Colour	④ IP Rating	⑤ Dimming
18D 30D 45D	27 (2700K) 30 (3000K) 40 (4000K) 60 (6000K)	BK (Black) WH (White) GY (Grey)	IP20 IP54	ND (Non-Dimming) DA (Dali) D0 (0-10V)

(Example Code Format: LY-TR-JUPE40-11W-30D-40-BK-IP20-DA)

DIMENSIONS (MM) & LIGHT DISTRIBUTION



JUPITER

Low-Voltage Magnetic Track Series

Jupiter Pendant Module 55



CRI 80 90 90+	PHASE	1-10V	DALI
2-3step McAdam <small>(optional)</small>	5 Years warranty	Operating Hours > 100,000	L70 > 50,000 Hours
UGR <19	OPERATION TEMP -20°C to 50°C!	RoHS	CE

SPECIFICATIONS

Product Code	LED Output (lm)	LED Power (W)	Efficiency (lm/W)	Input Voltage (V)	System Power (W)
LY-TR-JUPE55-13W-①-②-③-④-⑤	1300	13	100	48	14

CUSTOMIZABLE SPECIFICATIONS

① Beam Angle	② Colour Temperature	③ Housing Colour	④ IP Rating	⑤ Dimming
18D 24D 36D	27 (2700K) 30 (3000K) 40 (4000K) 60 (6000K)	BK (Black) WH (White) GY (Grey)	IP20 IP54	ND (Non-Dimming) DA (Dali) D0 (0-10V)

(Example Code Format: LY-TR-JUPE55-13W-24D-40-BK-IP20-DA)

DIMENSIONS (MM) & LIGHT DISTRIBUTION

