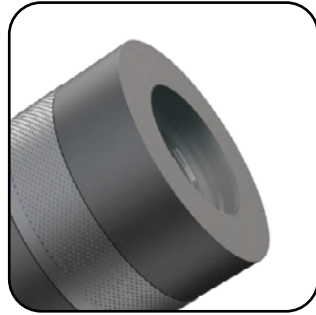


HERA

Beam Focusing
Landscape Spotlight
Series



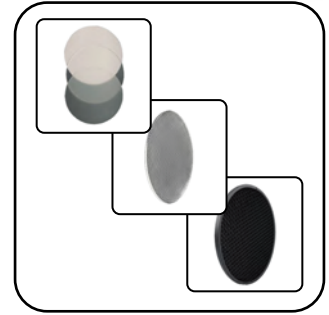
Focusable Beam



COB



Mounting Options



Lens Accessories

HERA

Beam Focusing Landscape Spotlight Series

Hera Alpha (COB)



CRI 80 90 90+	IP66	IK05	OPERATION TEMP -20°C to 50°C!
PHASE	1-10V	DALI	RoHS
2-3step McAdam	5 Years warranty	L70 50,000 Hours	CE

LENS ACCESSORIES

Honeycomb Filter	
Prismatic Diffuser	
Coloured Filters	

Product Code	LY-LD-HRA-HC
Product Code	LY-LD-HRA-PS
Product Code	LY-LD-HRA-CF

SPECIFICATIONS

Product Code	LED Output (lm)	LED Power	Efficiency (lm/W)	IP Rating	IK Rating	Beam Angle
LY-LD-HRA-6W-①-②-③	366	1 x 6W	61	66	05	15° - 60°

CUSTOMIZABLE SPECIFICATIONS

① Colour Temperature	② Input Voltage	③ Dimming
27 (2700K) 30 (3000K) 40 (4000K) 60 (6000K)	12V (12Vdc) 24V (24Vdc) 240V (240Vac)	ND (Non-Dimming) DA (Dali) D0 (0-10V) PH (Phase)

(Example Code Format: LY-LD-HRA-6W-27-12V-ND)

MOUNTING OPTIONS

Ring Mount LY-LD-HRA-RM	Spike Mounted LY-LD-HRA-SP0	Spike Mounted Pillar (300mm) LY-LD-HRA-SP3	Surface Mounted Pillar (300mm) LY-LD-HRA-P3
		Spike Mounted Pillar (500mm) LY-LD-HRA-SP5	Surface Mounted Pillar (500mm) LY-LD-HRA-P5
		Spike Mounted Pillar (800mm) LY-LD-HRA-SP8	Surface Mounted Pillar (800mm) LY-LD-HRA-P8
		Spike Mounted Pillar (1000mm) LY-LD-HRA-SP10	Surface Mounted Pillar (1000mm) LY-LD-HRA-P10

DIMENSIONS (MM)

<p>No Mount</p>	<p>SM Pillar Mount</p>	<p>Spiked Pillar Mount</p>	<p>355° Rotation</p> <p>25° Forward Tilt</p> <p>75° Backward Tilt</p>
<p>Spike Mounting</p>	<p>Ring Mount</p> <p>Max. Diameter 400mm</p>		

HERA

Beam Focusing Landscape Spotlight Series

Hera Beta (COB)



CRI 80 90 90+	IP66	IK05	OPERATION TEMP -20°C to 50°C!
PHASE	1-10V	DALI	RoHS
2-3step McAdam	5 Years warranty	L70 50,000 Hours	CE

LENS ACCESSORIES

Honeycomb Filter

Prismatic Diffuser

Coloured Filters

Product Code
LY-LD-HRB-HC

Product Code
LY-LD-HRB-PS

Product Code
LY-LD-HRB-CF

SPECIFICATIONS

Product Code	LED Output (lm)	LED Power	Efficiency (lm/W)	IP Rating	IK Rating	Beam Angle
LY-LD-HRB-12W-①-②-③-④-⑤	994	1 x 12W	82.8	66	05	15° - 60°

CUSTOMIZABLE SPECIFICATIONS

① Colour Temperature	② Input Voltage	③ Dimming
27 (2700K) 30 (3000K) 40 (4000K) 60 (6000K)	12V (12Vdc) 24V (24Vdc) 240V (240Vac)	ND (Non-Dimming) DA (Dali) D0 (0-10V) PH (Phase)

(Example Code Format: LY-LD-HRB-12W-27-12V-ND)

MOUNTING OPTIONS

Ring Mount LY-LD-HRB-RM	Spike Mounted LY-LD-HRB-SP0	Spike Mounted Pillar (300mm) LY-LD-HRB-SP3	Surface Mounted Pillar (300mm) LY-LD-HRB-P3
		Spike Mounted Pillar (500mm) LY-LD-HRB-SP5	Surface Mounted Pillar (500mm) LY-LD-HRB-P5
		Spike Mounted Pillar (800mm) LY-LD-HRB-SP8	Surface Mounted Pillar (800mm) LY-LD-HRB-P8
		Spike Mounted Pillar (1000mm) LY-LD-HRB-SP10	Surface Mounted Pillar (1000mm) LY-LD-HRB-P10

DIMENSIONS (MM)

No Mount

SM Pillar Mount

Spiked Pillar Mount

355° Rotation
25° Forward Tilt
75° Backward Tilt

Ring Mount

Max. Diameter 400mm

Ø150 - Ø400

HERA

Beam Focusing Landscape Spotlight Series

Hera Gamma (COB)



CRI 80 90 90+	IP66	IK05	OPERATION TEMP -20°C to 50°C!
PHASE	1-10V	DALI	RoHS
2-3step McAdam <small>(optional)</small>	5 Years warranty	L70 > 50,000 Hours	CE

LENS ACCESSORIES

Honeycomb Filter	
Prismatic Diffuser	
Coloured Filters	

Product Code	LY-LD-HRG-HC
Product Code	LY-LD-HRG-PS
Product Code	LY-LD-HRG-CF

SPECIFICATIONS

Product Code	LED Output (lm)	LED Power	Efficiency (lm/W)	IP Rating	IK Rating	Beam Angle
LY-LD-HRG-18W-①-②-③	1669	1 x 18W	92.7	66	05	15° - 60°

CUSTOMIZABLE SPECIFICATIONS

① Colour Temperature	② Input Voltage	③ Dimming
27 (2700K) 30 (3000K) 40 (4000K) 60 (6000K)	12V (12Vdc) 24V (24Vdc) 240V (240Vac)	ND (Non-Dimming) DA (Dali) D0 (0-10V) PH (Phase)

(Example Code Format: LY-LD-HRG-18W-27-12V-ND)

MOUNTING OPTIONS

Ring Mount LY-LD-HRG-RM	Spike Mounted LY-LD-HRG-SP0	Spike Mounted Pillar (300mm) LY-LD-HRG-SP3	Surface Mounted Pillar (300mm) LY-LD-HRG-P3
		Spike Mounted Pillar (500mm) LY-LD-HRG-SP5	Surface Mounted Pillar (500mm) LY-LD-HRG-P5
		Spike Mounted Pillar (800mm) LY-LD-HRG-SP8	Surface Mounted Pillar (800mm) LY-LD-HRG-P8
		Spike Mounted Pillar (1000mm) LY-LD-HRG-SP10	Surface Mounted Pillar (1000mm) LY-LD-HRG-P10

DIMENSIONS (MM)

No Mount

SM Pillar Mount

Spiked Pillar Mount

355° Rotation

25° Forward Tilt

75° Backward Tilt

Ring Mount

Max. Diameter 400mm

Ø150 - Ø400

HERA

Beam Focusing Landscape Spotlight Series

Hera Delta (COB)



CRI 80 90 90+	IP66	IK05	OPERATION TEMP -20°C to 50°C!
PHASE	1-10V	DALI	RoHS
2-3step McAdam <small>(optional)</small>	5 Years warranty	L70 > 50,000 Hours	CE

LENS ACCESSORIES

Honeycomb Filter	
Prismatic Diffuser	
Coloured Filters	

Product Code	LY-LD-HRG-HC
Product Code	LY-LD-HRG-PS
Product Code	LY-LD-HRG-CF

SPECIFICATIONS

Product Code	LED Output (lm)	LED Power	Efficiency (lm/W)	IP Rating	IK Rating	Beam Angle
LY-LD-HRD-40W-①-②-③	3887	1 x 40W	97.2	66	05	15° - 60°

CUSTOMIZABLE SPECIFICATIONS

① Colour Temperature	② Input Voltage	③ Dimming
27 (2700K) 30 (3000K) 40 (4000K) 60 (6000K)	12V (12Vdc) 24V (24Vdc) 240V (240Vac)	ND (Non-Dimming) DA (Dali) D0 (0-10V) PH (Phase)

(Example Code Format: LY-LD-HRD-40W-27-12V-ND)

MOUNTING OPTIONS

Ring Mount LY-LD-HRD-RM	Spike Mounted LY-LD-HRD-SP0	Spike Mounted Pillar (300mm) LY-LD-HRD-SP3	Surface Mounted Pillar (300mm) LY-LD-HRD-P3
		Spike Mounted Pillar (500mm) LY-LD-HRD-SP5	Surface Mounted Pillar (500mm) LY-LD-HRD-P5
		Spike Mounted Pillar (800mm) LY-LD-HRD-SP8	Surface Mounted Pillar (800mm) LY-LD-HRD-P8
		Spike Mounted Pillar (1000mm) LY-LD-HRD-SP10	Surface Mounted Pillar (1000mm) LY-LD-HRD-P10

DIMENSIONS (MM)

No Mount

SM Pillar Mount

Spiked Pillar Mount

Ring Mount

Max. Diameter 400mm