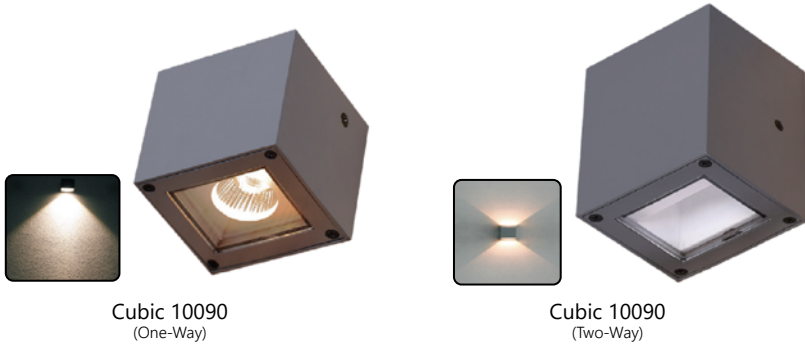


CUBIC

Surface Mounted Wall Light Series

CUBIC 10090



PHASE	1-10V	DALI	IP65 IK06
2-3step McAdam <small>(optional)</small>	CRI 80 90 90+	Operating Hours > 100,000	L70 > 50,000 Hours
OPERATION TEMP -20°C to 50°C!	5 Years warranty	RoHS	CE

SPECIFICATIONS

Cubic 10090 (One-Way)	Product Code	LED Output (lm)	LED Power (W)	Efficiency (lm/W)
	LY-WL-CU10090-1-6W-①-②-③-④-⑤	655	6	109.2

Cubic 10090 (Two-Way)	Product Code	LED Output (lm)	LED Power (W)	Efficiency (lm/W)
	LY-WL-CU10090-2-6W-①-②-③-④-⑤	2 x 655	2 x 6W	109.2

CUSTOMIZABLE SPECIFICATIONS

① Beam Angle	② Colour Temperature	③ Input Voltage	④ Housing Colour	⑤ Dimming
18D 25D 40D	27 (2700K) 30 (3000K) 40 (4000K) 60 (6000K)	24V (24Vdc) 240V (240Vac)	BK (Black) WH (White) BR (Brown)	ND (Non Dimming) DA (DALI) D0 (0-10V) PH (Phase)

(Example Code Format: LY-WL-CU10090-18D-27-24V-ND)

DIMENSIONS (MM) & LIGHT DISTRIBUTION

Cubic 10090 (One-Way)

Cubic 10090 (Two-Way)

Cubic 10090 (One-Way)

Center beam LUX	Beam width V	H
2m	324.84 LUX	1.0m 1.0m
4m	81.21 LUX	1.9m 1.9m
6m	36.09 LUX	2.9m 2.9m
8m	20.30 LUX	3.8m 3.8m
10m	12.99 LUX	4.8m 4.8m
12m	9.02 LUX	5.8m 5.7m

Ver. Spread: 27.0 Horiz. Spread: 26.9

Cubic 10090 (Two-Way)

Center beam LUX	Beam width V	H
2m	28.35 LUX	1.8m 3.0m
4m	7.09 LUX	3.7m 6.0m
6m	3.15 LUX	5.5m 9.0m
8m	1.77 LUX	7.4m 12.0m
10m	1.13 LUX	9.2m 15.0m
12m	0.79 LUX	11.1m 18.0m

Ver. Spread: 49.5 Horiz. Spread: 73.8

HOUSING COLOUR OPTIONS

